

OIL TANK FIXING FLANGE

FTA - FTR



FT flanges make it possible to fix suction and return lines on the reservoir cover.
Fitting a flexible insert allows separation of pipes. Both rigid pipes and flexible hoses can be separated from the reservoir walls, absorbing vibration and reducing plant noise emissions.

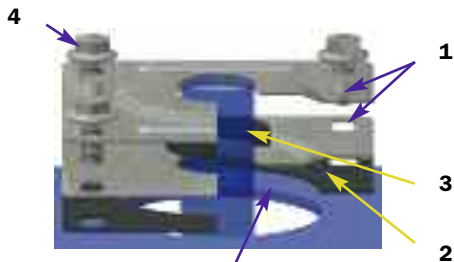
Temperature

- from -25 °C to +100 °C

Compatibility

- NBR seals and Cork Gasket, compatible with:
Mineral oils to ISO 2943 - aqueous emulsions
Synthetic fluids, glycol water.

FTA



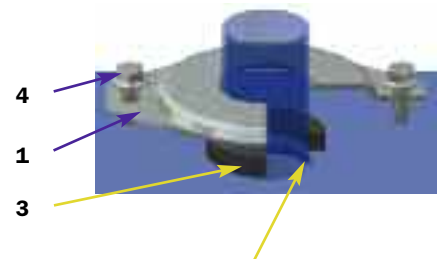
Drill the panel:

Ø 105 for types from 1215 ÷ 3842
Ø 145 for types from 4850 ÷ 8789

FTA - FTR (Materials)

- 1 - Flange: Galvanised Steel
- 2 - Flange seal: Inorganic fibre
- 3 - Tube seal: NBR
- 4 - Screw: Galvanised Steel

FTR

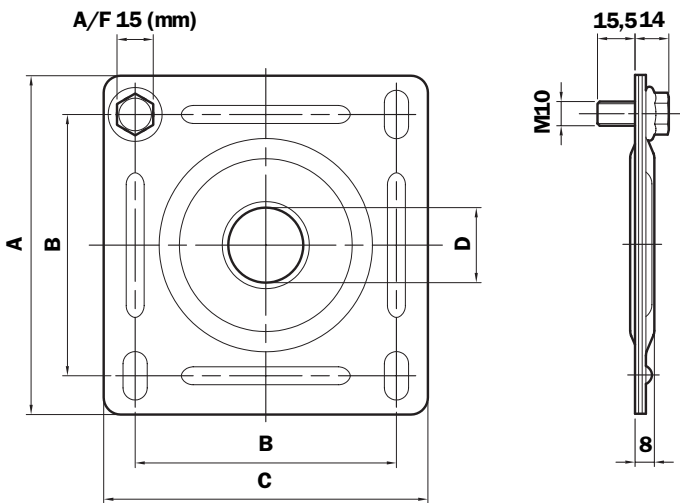


Drill the panel max 2 mm more than the pipe Ø

- 1 - Flexible element
- 2 - Seal

Dimensions

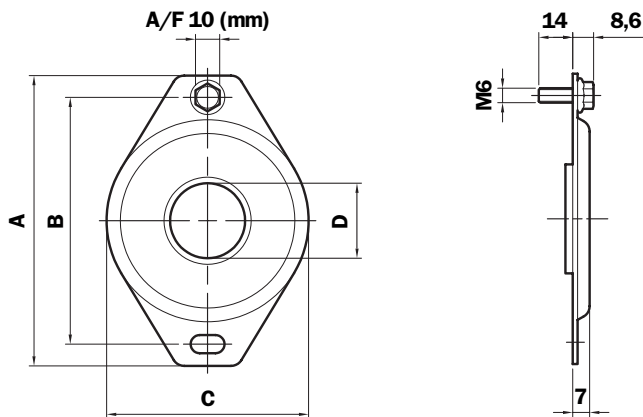
FTA



Type	A	B	C	Ø D	Weight (Kg)
FTA 1215	140	108	134	12÷15	0,590
FTA 1620	140	108	134	16÷20	0,570
FTA 2225	140	108	134	22÷25	0,550
FTA 2630	140	108	134	26÷30	0,530
FTA 3235	140	108	134	32÷35	0,500
FTA 3842	140	108	134	38÷42	0,520
FTA 4850	190	159	184	48÷50	0,920
FTA 6061	190	159	184	60÷61	0,900
FTA 7577	190	159	184	75÷77	0,860
FTA 8789	190	159	184	87÷89	0,830

N.B. Tightening torque MAX 20 Nm.

FTR



Type	A	B	C	Ø D	Weight (Kg)
FTR 0610	71	54	39,5	6÷10	0,045
FTR 1215	71	54	39,5	12÷15	0,043
FTR 1620	71	54	39,5	16÷20	0,040
FTR 2225	120	102	83,5	22÷25	0,100
FTR 2630	120	102	83,5	26÷30	0,103
FTR 3235	120	102	83,5	32÷35	0,098
FTR 3842	120	102	83,5	38÷42	0,095
FTR 4850	120	102	83,5	48÷50	0,090
FTR 6061	120	102	83,5	60÷61	0,085

N.B. Tightening torque MAX 20 Nm.

Ordering information

Suction line flange

FTA

Example: FTA

1	2	3	4
□	□	□	□
2630	G	A	P01

1 - Size

Ø Pipe Min - Max	Size
12 - 15	1215
16 - 20	1620
22 - 25	2225
26 - 30	2630
32 - 35	3235
38 - 42	3842
48 - 50	4850
60 - 61	6061
75 - 77	7577
87 - 89	8789

2 - Flange seal

G Inorganic fibre

3 - Pipe seal

A NBR

4 - Options

P01 MP Filtri standard

Return line flange

FTR

Example: FTA

1	2	3	4
□	□	□	□
2630	0	A	P01

1 - Size

Ø Pipe Min - Max	Size
6 - 10	0610
12 - 15	1215
16 - 20	1620
22 - 25	2225
26 - 30	2630
32 - 35	3235
38 - 42	3842
48 - 50	4850
60 - 61	6061

2 - Flange seal

0 Without

3 - Pipe seal

A NBR

4 - Options

P01 MP Filtri standard

Series LCP***N

Dimensions

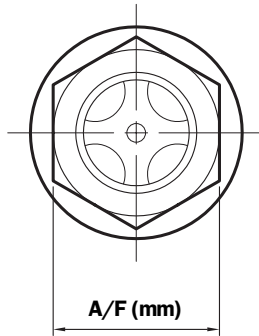


Standard view

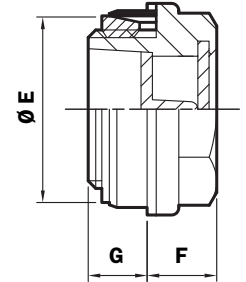
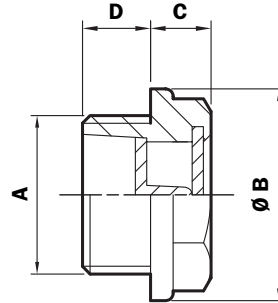


With view contrast and Expansion kit

LCP***N***S



LCP***N***K



Size	A	Ø B	C	A/F (mm)	D	Ø E	F	G
G13	G 1/4"	20	7	17	9	-	-	-
G16	G 3/8"	22	8	18	9	19,5	9,2	7,8
G20	G 1/2"	28	8	22	9	25,5	9,2	7,8
G26	G 3/4"	35	9	27	10	29,5	10,5	8,5
G33	G 1"	42	11,5	34	12,5	39	13	11
G42	G 1 1/4"	52	12	42	13	49	13,5	11,5
G48	G 1 1/2"	58	14	47	13	54	15,5	11,5
G60	G 2"	74	14	64	20	-	-	-

LCP***N*** (Materials)

- 1 - Body: Nylon
- 2 - Lens: Thermoplastic
- 3 - Contrast screen: Nylon
- 4 - Seals: NBR
Inorganic fibre
- 5 - Expansion kit: Brass - NBR

Quantity per pack
Number of Parts

LCP/N 25

N.B. Recommended tightening torque 10 Nm.

Ø hole for Expansion kit

Size	Diameter
G16	Ø 20
G20	Ø 26
G26	Ø 30
G33	Ø 40
G42	Ø 50
G48	Ø 55

Spare parts

Size	Expansion Kit
-	-
G16	2026020
G20	2026021
G26	2026019
G33	2026023
G42	2026025
G48	2026026
-	-

Ordering information

Level indicator

LCP***N

Example: LCP

1	2	3	4	5	6
<input type="checkbox"/>	<input type="checkbox"/>	<input type="checkbox"/>	<input type="checkbox"/>	<input type="checkbox"/>	<input type="checkbox"/>
G20	N	C	A	K	P01

1 - Size

G13	G 1/4"
G16	G 3/8"
G20	G 1/2"
G26	G 3/4"
G33	G 1"
G42	G 1 1/4"
G48	G 1 1/2"
G60	G 2"

2 - Material

N Black nylon

3 - Accessories

S Standard view

C Baffle (for except G13)

4 - Seal

A NBR (only K)

B Inorganic fibre

5 - Expansion kit

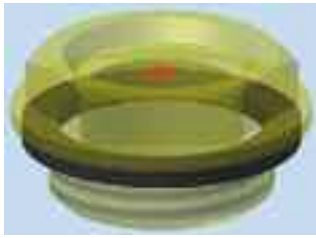
S Without
 K Expansion kit
(for except G13 - G16)

6 - Options

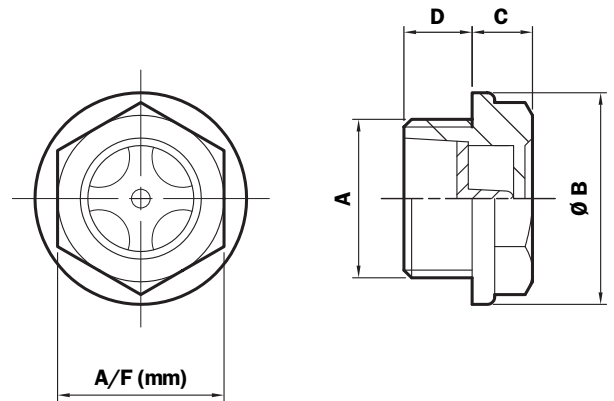
P01 MP Filtri standard

Series LCP***T

Dimensions



LCP***T**



LCP*T** (Materials)**

- 1 - Body: Polyamide
- 2 - Contrast screen: Nylon
- 3 - Seal: NBR

**Quantity per pack
Number of Parts**

LCP/T 25

Size	A	Ø B	C	A/F (mm)	D
G13	G 1/4"	19	4,5	15	7
G16	G 3/8"	21,7	5	17	7,5
G20	G 1/2"	27	5,5	21	8
G26	G 3/4"	32,8	6	26	9
G33	G 1"	39,8	6,5	32	10
G42	G 1 1/4"	52	12	42	13

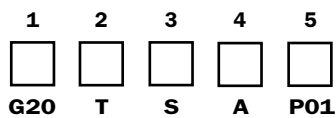
N.B. Seals thickness 2 mm.
Recommended tightening torque 10 Nm.

Ordering information

Level indicator

LCP***T

Example: LCP



1 - Size

- G13 G 1/4"
- G16 G 3/8"
- G20 G 1/2"
- G26 G 3/4"
- G33 G 1"
- G42 G 1 1/4"

2 - Material

- T Polyamide

3 - Accessories

- S Without baffle
- C Baffle (G26-G33-G42 only)

4 - Seal

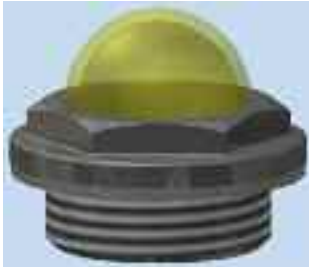
- A NBR

5 - Options

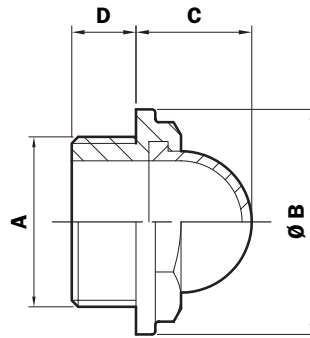
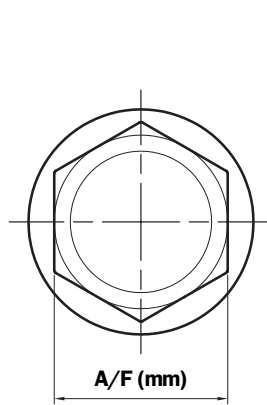
- P01 MP Filtri standard

Series LCC***N

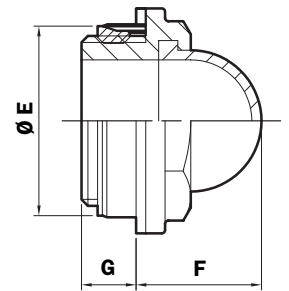
Dimensions



LCC***N***S



LCC***N***K



LCC***N***** (Materials)

- 1 - Body: Nylon
- 2 - Lens: Polyamide
- 3 - Contrast screen: Nylon
- 4 - Seals: NBR
Inorganic fibre
- 5 - Expansion kit: Brass - NBR

Quantity per pack Number of Parts

LCC/N 25

Size	A	Ø B	C	A/F (mm)	D	Ø E	F	G
G20	G 1/2"	28	15,5	22	9,5	25,5	16,5	8,3
G26	G 3/4"	35	18	27	10	29,5	19,5	8,5
G33	G 1"	42	22	34	12	39	23,5	10,5
G42	G 1 1/4"	52	28	44	13	49	29,5	11,5
G48	G 1 1/2"	58	31	50	13,5	54	32,5	12
G60	G 2"	74	37	64	20	-	-	-

N.B. Seals thickness 2 mm.
Recommended tightening torque 10 Nm.

Ø hole for Expansion kit

Size	Diamètre
G20	Ø 26
G26	Ø 30
G33	Ø 40
G42	Ø 50
G48	Ø 55

Spare parts

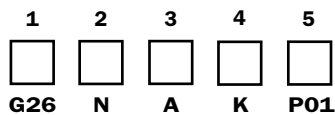
Size	Expansion Kit
G20	G20
G26	G26
G33	G33
G42	G42
G48	G48
-	-

Ordering information

Level indicator

LCC***N

Example: LCC



1 - Size

G20	G 1/2"
G26	G 3/4"
G33	G 1"
G42	G 1 1/4"
G48	G 1 1/2"
G60	G 2"

2 - Material

N Black nylon

3 - Seal

A NBR (K only)

B Inorganic fibre

4 - Expansion kit

S Without

K Expansion kit

5 - Options

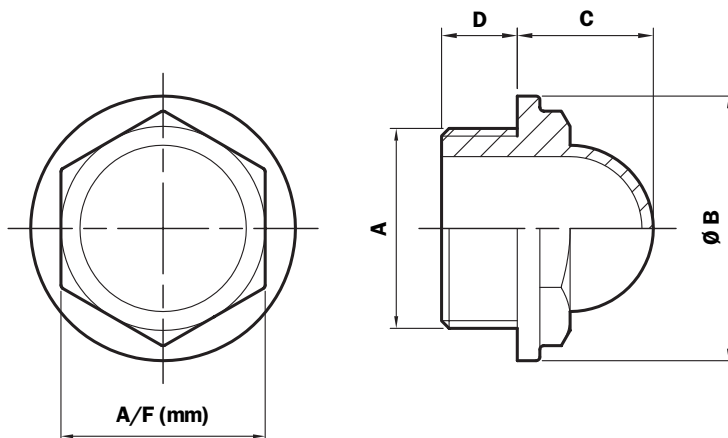
P01 MP Filtri standard

Series LCC***T

Dimensions



LCC***T**



LCC***T** (Materials)

- 1 - Body: Polyamide
- 2 - Seal: NBR

Quantity per pack

Number of Parts

LCC/T 25

Size	A	Ø B	C	A/F (mm)	D
G13	G 1/4"	19	10,5	15	7
G16	G 3/8"	21,7	12	17	7,5
G20	G 1/2"	27	14,5	21	8
G26	G 3/4"	32,8	17	26	9
G33	G 1"	39,8	20,5	32	10

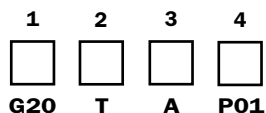
N.B. Seals thickness 2 mm.
Recommended tightening torque 10 Nm.

Ordering information

Level indicator

LCC***T

Example: LCC



1 - Size

G13	G 1/4"
G16	G 3/8"
G20	G 1/2"
G26	G 3/4"
G33	G 1"

3 - Seal

A NBR

4 - Options

P01 MP Filtri standard

2 - Material

T Polyamide

PRESSURE GAUGE SELECTORS



Gauge isolator valves are designed to protect pressure gauges from pressure shocks when the pressure reading is not required; after each reading setting the selector to the closed position serves to depressurise the pressure gauge by means of the T fitting connected to the reservoir. 3 and 6-way pressure gauge selectors perform the same function as the gauge isolator valves, allowing pressure values from different parts of the system to be read using a single pressure gauge.

Working pressure

- 400 bar

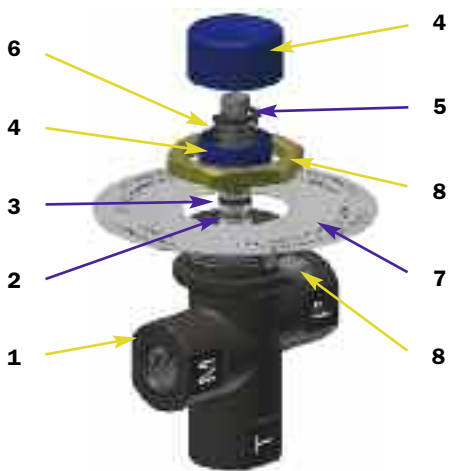
Temperature

- From -25 °C to +100 °C

Compatibility

- NBR seals, compatible with:
Mineral oils to ISO 2943 - aqueous emulsions
Synthetic fluids, glycol water.
- FPM seals, compatible with:
Synthetic fluids type HS-HFDR-HFDS-HFDU.

Series EM1 - A



EM1-A (Materials)

- 1 - Body: Cast Iron
- 2 - Pin: Steel
- 3 - Seals: NBR - FPM
- 4 - Knob/Cover: Nylon
- 5 - Stop ring: Steel
- 6 - Spring: Steel
- 7 - Nameplate: Aluminium
- 8 - Nut-Screw: Galvanised Steel

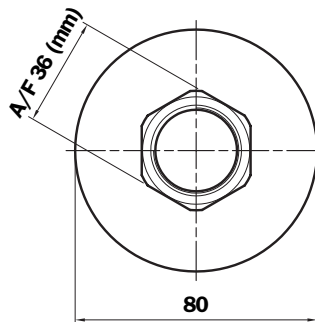
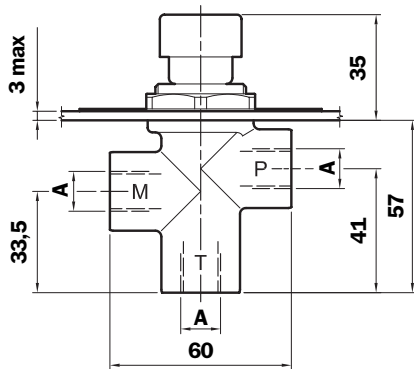
Weight

EM1-A: 0,410 Kg

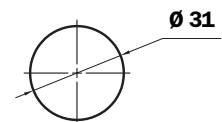
Instructions for using gauge isolators series: EM1 "A"

- 1**
Button not pressed: pressure gauge isolated.
- 2**
Button pressed: pressure gauge reading.
- 3**
Button pressed and turned (either to left or right): button remains in position and pressure gauge measures pressure continuously.
- 4**
To isolate the pressure gauge from pressure reading, turn the button until it returns to the not pressed position.

Dimensions



Mounting holes

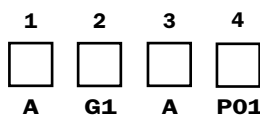


Type	A
G1	G 1/4"
G2	1/4" NPT
G3	SAE 5 (1/2" 20 UNF)

Ordering information

Pressure gauge isolator EM1

Example: EM1



1 - Mounting type

A Panel mounting with hex nut

2 - Connections

- G1** G 1/4"
- G2** 1/4" NPT
- G3** SAE 5 (1/2" 20 UNF)

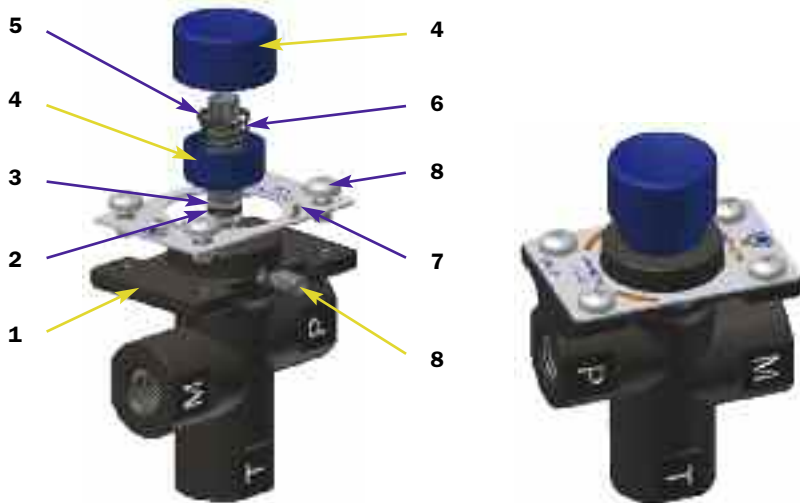
3 - Seal

- A** NBR
- V** FPM

4 - Options

- P01** MP Filtri standard

Series EM1 - B



EM1-B (Materials)

- 1 - Body: Cast Iron
- 2 - Pin: Steel
- 3 - Seals: NBR - FPM
- 4 - Knob/Cover: Nylon
- 5 - Stop ring: Steel
- 6 - Spring: Steel
- 7 - Nameplate: Aluminium
- 8 - Nut-Screw: Galvanised Steel

Weight

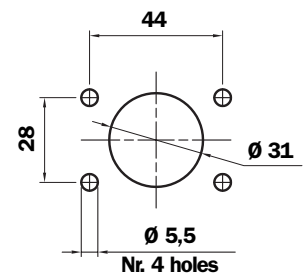
EM1-B: 0,440 Kg

Instructions for using gauge isolators series: EM1 "B"

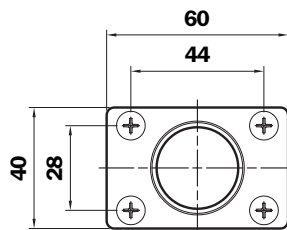
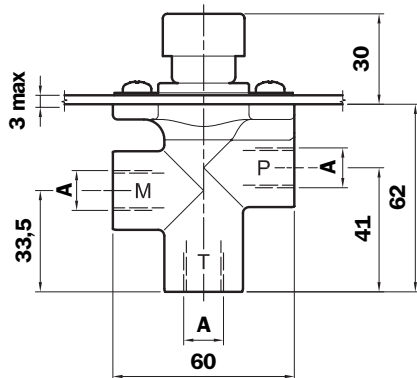
- 1**
Button not pressed: pressure gauge isolated.
- 2**
Button pressed: pressure gauge reading.
- 3**
Button pressed and turned (either to left or right): button remains in position and pressure gauge measures pressure continuously.
- 4**
To isolate the pressure gauge from pressure reading, turn the button until it returns to the not pressed position.

Dimensions

Mounting holes

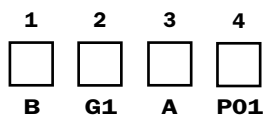


Type	A
G1	G 1/4"
G2	1/4" NPT
G3	SAE 5 (1/2" 20 UNF)



Pressure gauge isolator EM1

Example: EM1



1 - Mounting type

B Panel mounting with screws

2 - Connections

- G1** G 1/4"
- G2** 1/4" NPT
- G3** SAE 5 (1/2" 20 UNF)

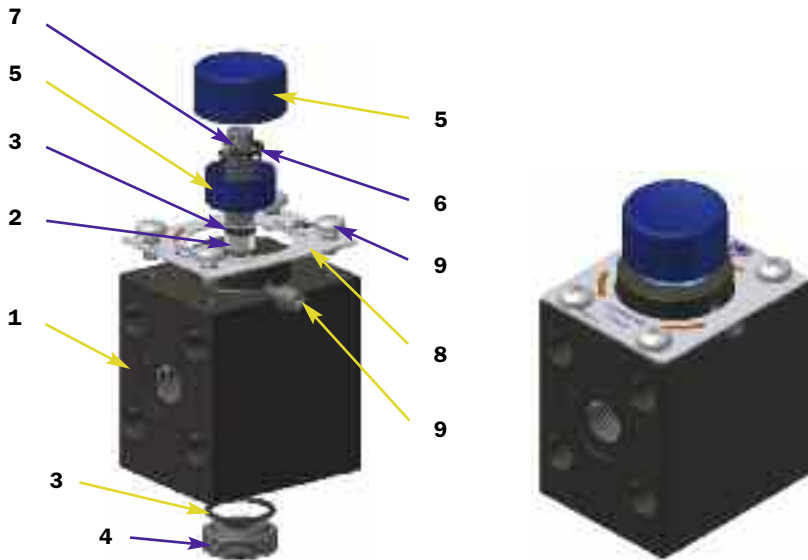
3 - Seal

- A** NBR
- V** FPM

4 - Options

- P01** MP Filtri standard

Series EM1 - C



Instructions for using gauge isolators series: EM1 "C"

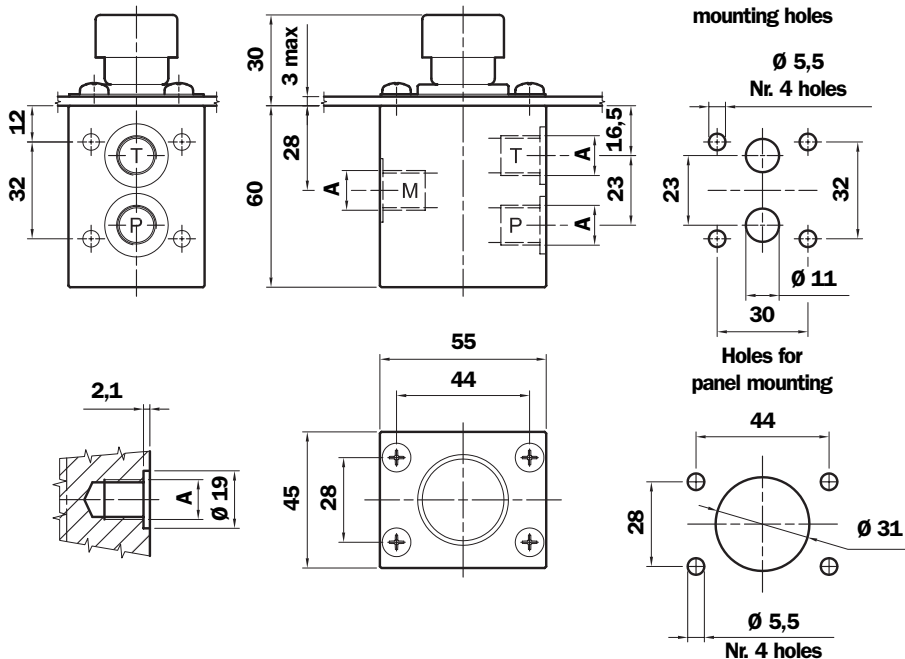
- 1**
Button not pressed: pressure gauge isolated.
- 2**
Button pressed: pressure gauge reading.
- 3**
Button pressed and turned (either to left or right): button remains in position and pressure gauge measures pressure continuously.
- 4**
To isolate the pressure gauge from pressure reading, turn the button until it returns to the not pressed position.

EM1-C (Materials)

- | | |
|-------------------------------------|------------------------------------|
| 1 - Body: Cast Iron | 6 - Stop ring: Steel |
| 2 - Pin: Steel | 7 - Spring: Steel |
| 3 - Seals: NBR - FPM | 8 - Nameplate: Aluminium |
| 4 - Plug: Anodised Aluminium | 9 - Screw: Galvanised Steel |
| 5 - Knob/Cover: Nylon | |

Weight

EM1-C: 1,0 Kg

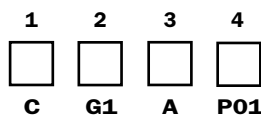


Dimensions

Type	A
G1	G 1/4"
G2	1/4" NPT
G3	SAE 5 (1/2" 20 UNF)

Pressure gauge isolator EM1

Example: EM1



1 - Mounting type

C Universal

2 - Connections

G1 G 1/4"
G2 1/4" NPT
G3 SAE 5 (1/2" 20 UNF)

3 - Seal

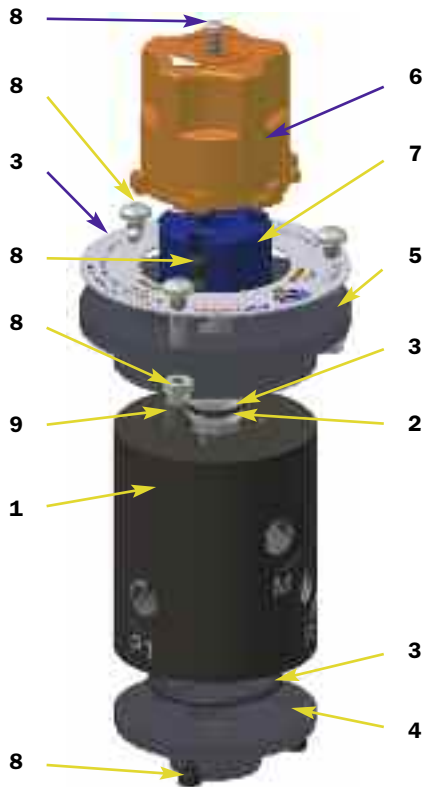
A NBR
V FPM

4 - Options

P01 MP Filtri standard

Ordering information

Series SVM



SVM (Materials)

- 1 - Body: Cast Iron
- 2 - Pin: Steel
- 3 - Seals: NBR - FPM
- 4 - Cover: Anodised Aluminium

5 - Flange: Anodised Aluminium

- 6 - Knob: Nylon
- 7 - Ringnut: Nylon
- 8 - Screws-Nuts: Galvanised/Phosphated Steel
- 9 - Pin: Steel

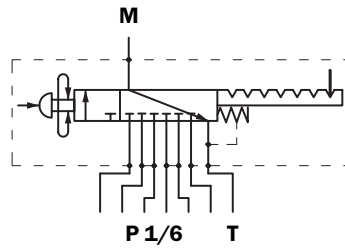
Weights

SVM 3: 1,547 Kg

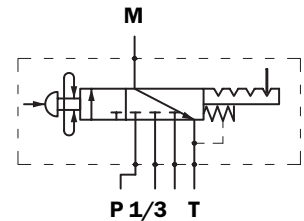
SVM 6: 1,507 Kg

Hydraulic schematics

SVM 6

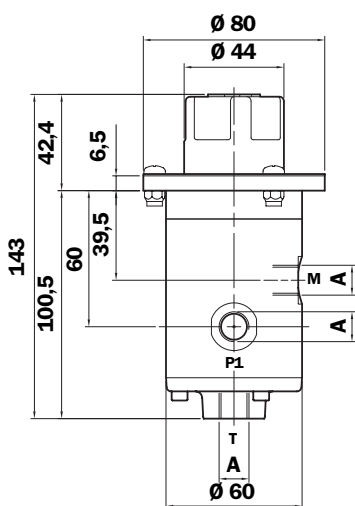


SVM 3

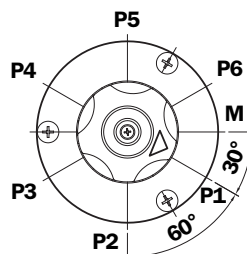
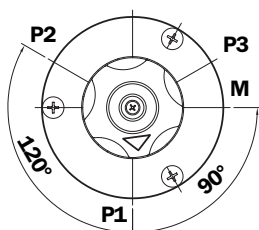
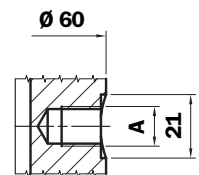
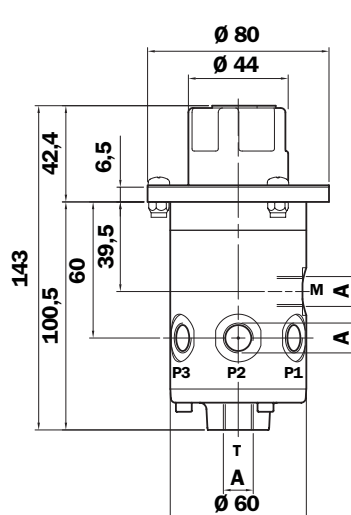


Dimensions

SVM 3

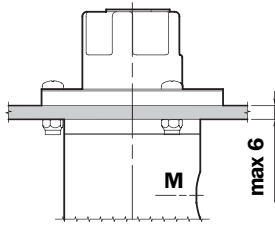


SVM 6

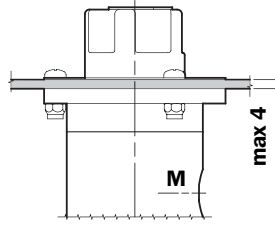
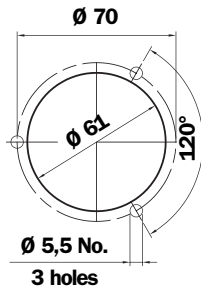


Type	A
G1	G 1/4"
G2	1/4" NPT
G3	SAE 5 (1/2" 20 UNF)

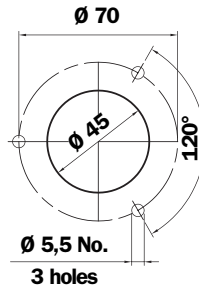
Mounting holes



Type A



Type B



Instructions for using gauge isolators series:

SVM

1

Knob not pressed: pressure gauge isolated.

2

Turn the knob to select the pressure value.

3

Knob pressed: pressure gauge reading.

4

Knob pressed and turned: the knob remains in position and pressure gauge measures pressure continuously.

5

To isolate the pressure gauge from pressure reading, turn the button until it returns to the not pressed position.

Ordering information

Selector for pressure gauge SVM

Example: SVM

1	2	3	4
<input type="checkbox"/>	<input type="checkbox"/>	<input type="checkbox"/>	<input type="checkbox"/>
6	G1	A	P01

1 - Number of connections

3	Pressure ports
6	Pressure ports

2 - Connections

G1	G 1/4"
G2	1/4" NPT
G3	SAE 5 (1/2" 20 UNF)

3 - Seal

A	NBR
V	FPM

4 - Options

P01	MP Filtri standard
-----	--------------------

SERIES

Electromagnetic Float Level Indicators



Production summary



Contamination monitoring products

- Calibrated on test rigs manufactured and certified to ISO 11943 based on methods from ISO 11171
- On-line and In-line counting to 400 bar
- Bottle sampler options
- Mobile designs RS 232 - RS 485 digital bus interface



Suction filters

- Flow rates to 620 l/min

Mounting:

- Tank immersed
- In-Line
- In tank with shut off valve
- In tank with flooded suction



Return filters

- Flow rates to 3000 l/min
- Pressure to 20 bar

Mounting:

- In-Line
- Tank top
- In single and duplex designs



Pressure filters

- Flow rates to 700 l/min
- Pressure from 110 bar to 560 bar

Mounting:

- In-Line
- Manifold
- In single and duplex designs



Spin-On filters

- Flow rates to 300 l/min
- Pressure to 35 bar

Mounting:

- In-Line
- Tank top

Production summary



Stainless Steel Pressure filters

- Flow rates to 100 l/min
- Pressure from 350 bar to 700 bar

Mounting:

- In-Line
- Manifold
- In single and duplex designs



In-Line filters

- Flow rates to 3000 l/min
- Pressure to 80 bar

Mounting:

- In-Line
- Parallel manifold version
- In single and duplex designs



Filtration units

- Flow rates from 15 l/min to 200 l/min
- In static and mobile style



Accessories

- Oil filler and air breather plugs
- Optical and electrical level gauges
- Pressure gauge valve selectors
- Pipe fixing brackets
- Pressure gauges



Mechanical Products

- Aluminium bell housings for motors from 0.12 kW to 400 kW
- Couplings in Aluminium - Cast Iron - Steel
- Damping rings
- Support feet
- Aluminium tanks
- Inspection doors

ELECTROMAGNETIC FLOAT LEVEL INDICATORS



Temperature: from -15°C to $+80^{\circ}\text{C}$

Compatibility

- In compliance with ISO 2943, suitable for mineral oils (types HH-HM-HR-HV-HG to ISO 6743/4) and synthetic fluids (types HS-HFDR-HFDS-HFDU to ISO 6743/4)
- For fluids, lengths and operating temperatures other than those specified, consult the Technical-Sales department

Electromagnetic float level indicators use the action of a magnet fixed to the float to change the electrical status of a reed switch mounted on the inside of the tube.

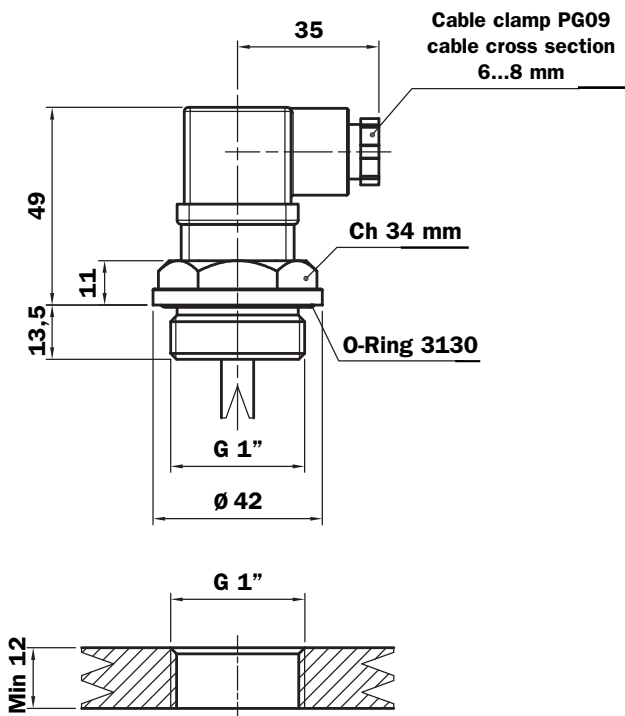
As the level of fluid in the tank changes the float moves together with the magnet, which, when it encounters the reed switch, causes the contacts to move thereby tripping an alarm signal.

The movement of the float is normally limited by mechanical stops because once the magnet exceeds the point at which it activates the reed switch, the switch reverts to its original status.

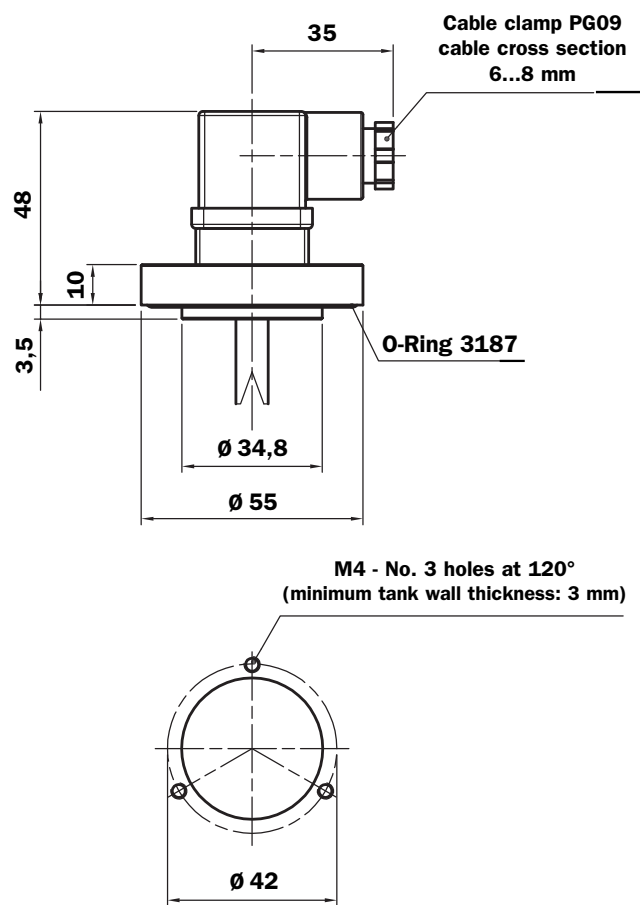
To invert the contact status from NO to NC and vice versa, it is normally sufficient to invert the float.

Connections

Threaded Connection



Flanged Connection



Supplied with the entire flanged series

Fixing kit inclusive of:

- 3 M4x12 Allen screws - AISI 304
- 3 plain washers - Copper

Series LEN



LEN (Materials)

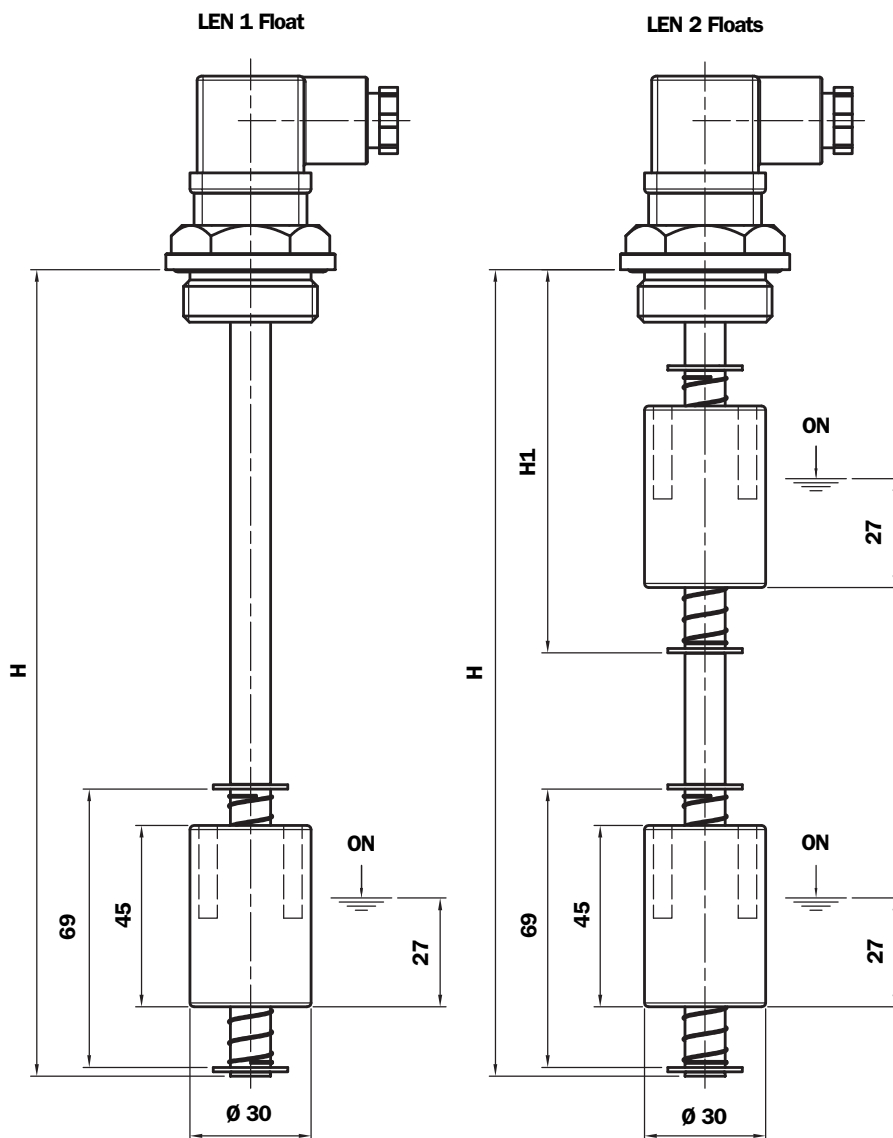
- Flange/Threaded body: Aluminium
- Tube: Brass (AISI 304 on request)
- Float: Nylon foam (AISI 316 on request)
- O-Ring: NBR
- Circlip: Phosphor bronze
- Contact: N.C. reed (N.O. on request)
- Protection rating: IP65
- Max switching capacity: 80 W
- Max switching current: 1 A
- Max switching voltage: 250 Vac
- Fluid specific gravity: > 0.75

Weight

185 g (For 1 float L=150 mm)

230 g (For 2 floats L=200 mm)

Dimension

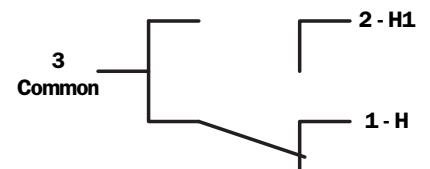


Functional diagram
LEN 1 Float



To invert the contact status from NO to NC and vice versa, simply invert the float.

Functional diagram
LEN 2 Floats



To invert the contact status from NO to NC and vice versa, simply invert the float.

Length	H	H1
100	100	-
150	150	-
200	200	95
250	250	105
300	300	105
350	350	115
400	400	115
500	500	125

Series LEG



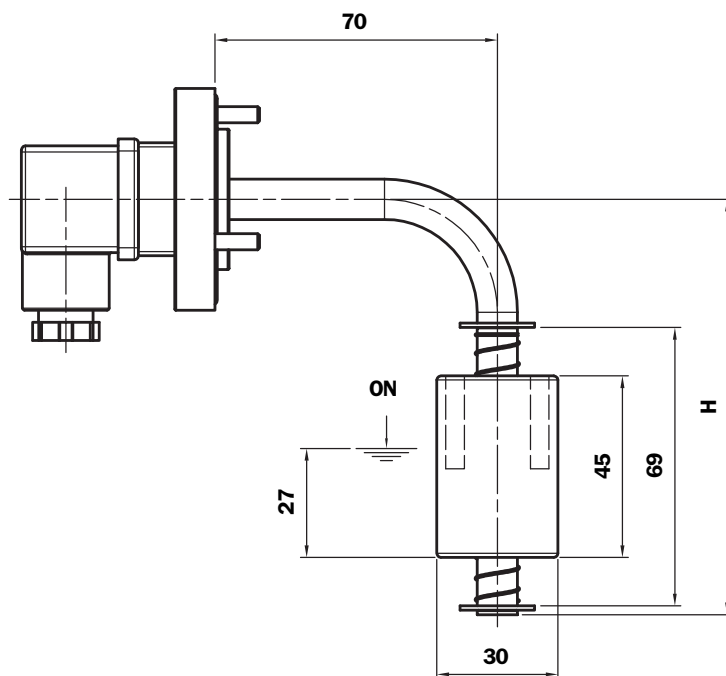
LEG (Materials)

- Flange: Aluminium
- Tube: Brass
- Float: Nylon foam
- O-Ring: NBR
- Circlip: Phosphor bronze
- Contact: N.C. reed (N.O. on request)
- Protection rating: IP65
- Max switching capacity: 80 W
- Max switching current: 1 A
- Max switching voltage: 250 Vac
- Fluid specific gravity: > 0.75

Weight

180 g (For L=103 mm)

Dimension



LEG 1 Float



To invert the contact status from NO to NC and vice versa, simply invert the float.

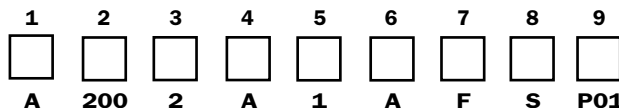
Length	H
103	103
200	200
300	300
350	350

Ordering information LEG

Electrical float level indicators series LEG

LEG

Example: LEG



1 - Tube material

A Brass

2 - Length

- 102
 200
 300
 350

3 - Number of floats

1 Nr. 1 float

4 - Float material

A Nylon foam

5 - Changeover contacts

1 NC

6 - Seals

A NBR

7 - Type of fixing

F 3 hole flange

8 - Electrical connection

S DIN 43650 connector

9 - Options

P01 MP Filtri standard

Pxx On request

Dimension



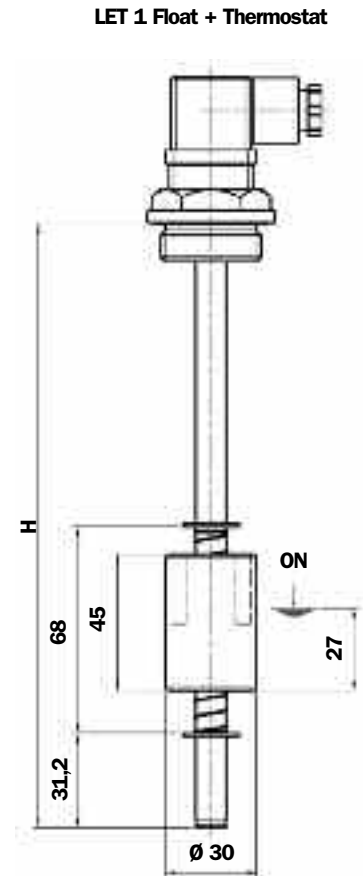
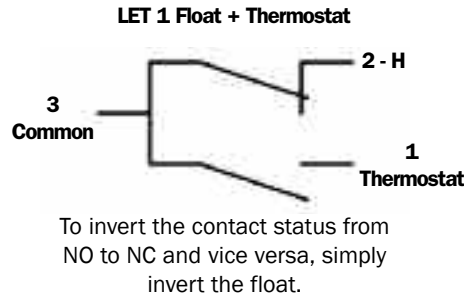
LET (Materials)

- Flange/Threaded body: Aluminium
- Tube: Brass (AISI 304 on request)
- Float: Nylon foam (AISI 316 on request)
- O-Ring: NBR
- Circlip: Phosphor bronze
- Contact: N.C. reed (N.O. on request)
- Protection rating: IP65
- Max switching capacity: 80 W
- Max switching current: 1 A
- Max switching voltage: 250 Vac
- Fluid specific gravity: > 0.75

Weight

180 g (For L=150 mm)

Length	H
100	100
150	150
200	200
250	250
300	300
350	350
400	400
500	500



Ordering information LET

Electrical float level indicators series

LET

Example: LET

1 - Tube material

- A** Brass
- B** AISI 304 (special on request)

2 - Length

- 150**
- 200**
- 250**
- 300**
- 400**
- 500**

3 - Number of floats

- 1** Nr. 1 float

4 - Float material

- A** Nylon foam
- B** AISI 316 (special on request)

1	2	3	4	5	6	7	8	9	10
A	200	1	A	1	A	F	S	60	P01

5 - Contacts

- 1** NC

6 - Seals

- A** NBR

7 - Type of fixing

- F** 3 hole flange
- G** G 1" thread

8 - Electrical connection

- S** DIN 43650 connector

9 - Thermostat trip temperature

- 50** 50°C N.O.
- 60** 60°C N.O.
- 70** 70°C N.O.

10 - Options

- P01** MP Filtri standard
- Pxx** On request

Series LEM



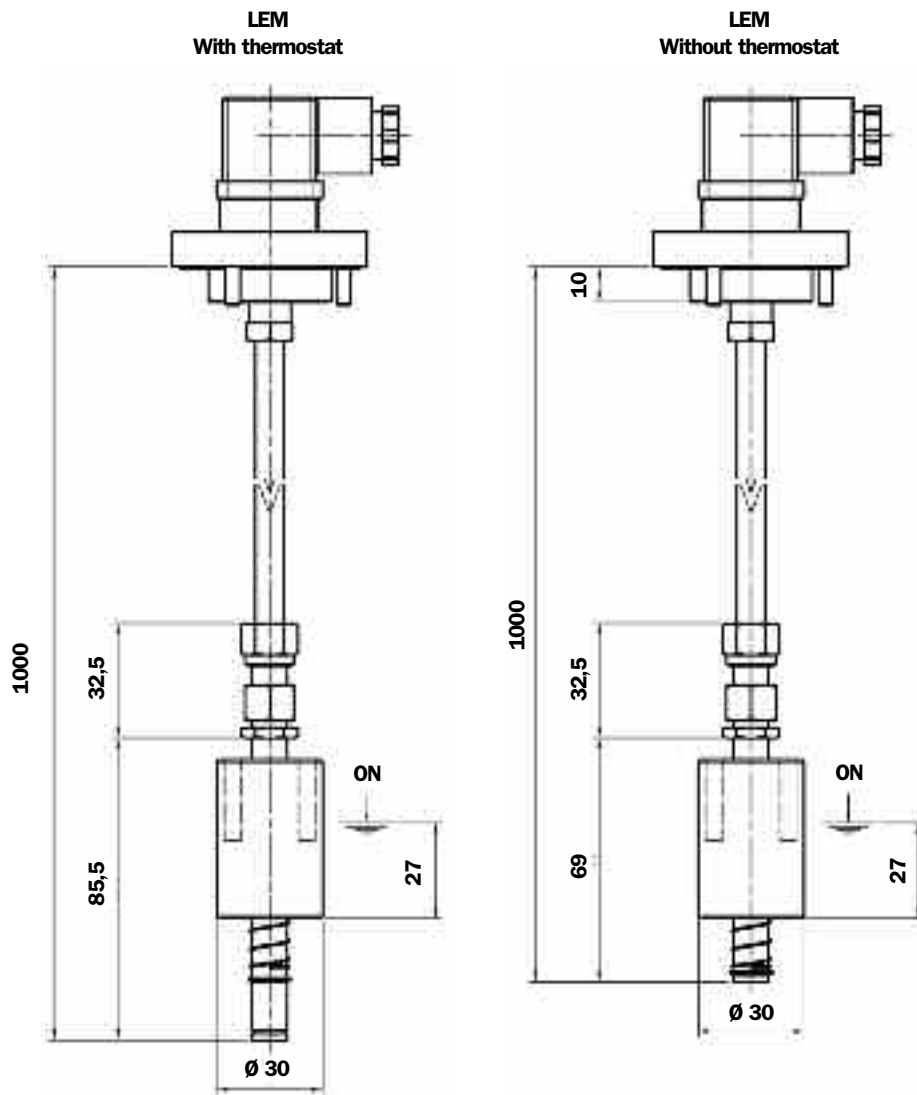
LEM (Materials)

- Flange/Threaded body: Aluminium
- Tube: Brass
- Float: Nylon foam
- O-Ring: NBR
- Circlip: Phosphor bronze
- Float contact: N.C. reed (N.O. on request)
- Thermostat contact: N.O. (N.C. on request)
- Protection rating: IP65
- Max switching capacity: 80 W
- Max switching current: 1 A
- Max switching voltage: 250 Vac
- Fluid specific gravity: > 0.75

Weight

406 g

Dimension



Wiring

Float only:

- Use Connectors 1 and 2 (both WHITE wires)

Float + Thermostat:

- 1 Thermostat: BROWN wire
- 2 Float: WHITE wire
- 3 Common: ORANGE wire

LEM 1 Float without Thermostat



LEM 1 Float + Thermostat



To invert the contact status from NO to NC and vice versa, simply invert the float.

Installation



1
Cut the tube to the required length.



2
Secure the level indicator to the tube by means of the ferrule system (14 mm wrench), routing the connection wires out of the part opposite to the fixing



3
Wire the connector



3
Secure the connector support to the tube by mean of the ferrule system (14 mm wrench)

Ordering information LEM

Electrical float level indicators series

LEM

Example: LEM

1	2	3	4	5	6	7	8
<input type="checkbox"/>	<input type="checkbox"/>	<input type="checkbox"/>	<input type="checkbox"/>	<input type="checkbox"/>	<input type="checkbox"/>	<input type="checkbox"/>	<input type="checkbox"/>
A	A	1	A	F	S	70	P01

1 - Tube material

A Brass

2 - Float materiale

A Nylon foam

3 - Contact

1 NC

4 - Seals

A NBR

5 - Type of fixing

F 3 hole flange

G G1" thread

6 - Electrical connection

S DIN 43650 connector

7 - Thermostat

00 Without thermostat

50 50°C N.O.

60 60°C N.O.

70 70°C N.O.

8 - Options

P01 MP Filtri standard

Pxx On request

Series LEU



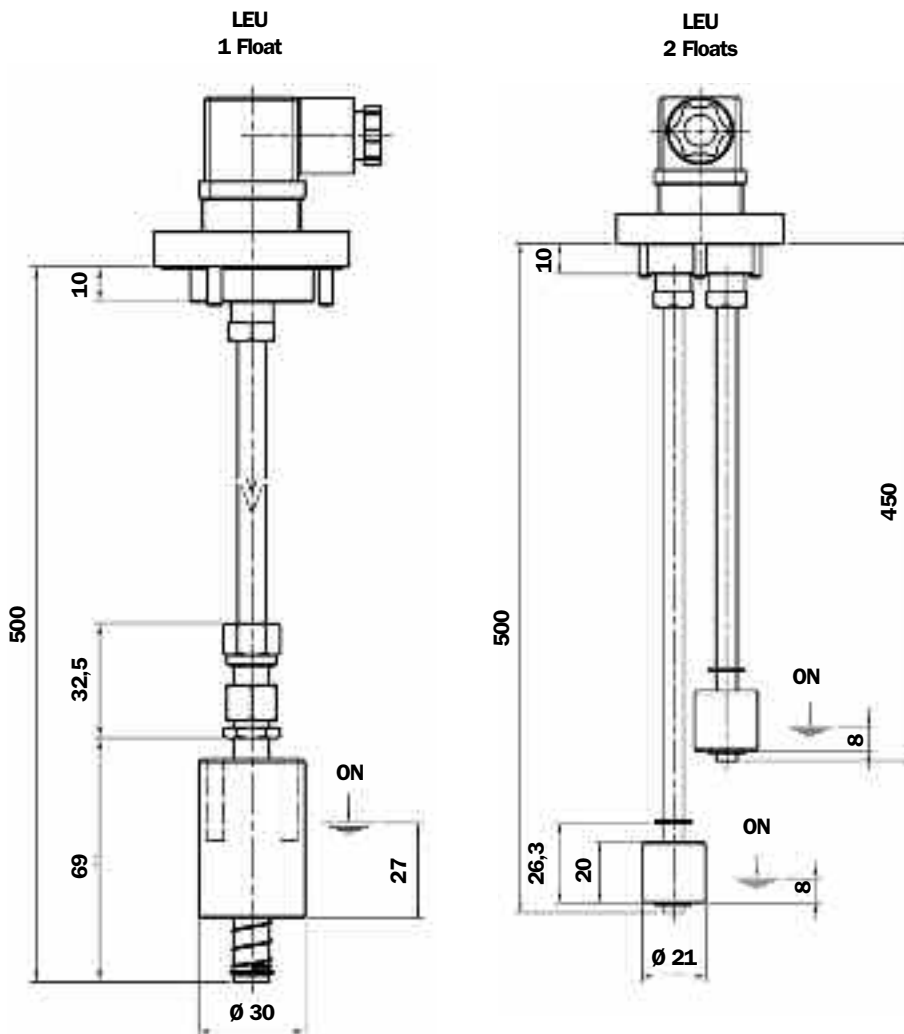
LEU (Materials)

- Flange: Aluminium
- Tube: AISI 304
- Float: Hard rubber (AISI 316 on request)
- O-Ring: NBR
- Circlip: AISI 304
- Float contact: N.C. reed (N.O. on request)
- Protection rating: IP65
- Max switching capacity: 50 W
- Max switching current: 0.5 A
- Max switching voltage: 250 Vac
- Fluid specific gravity: > 0.75

Weight

- 310 g (for 1 float)
- 415 g (for 2 floats)

Dimension



Wiring

1 Float:

- Use Connectors 1 and 2 (both WHITE wires)

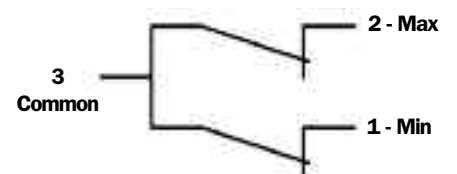
MIN and MAX floats:

- 1 Minimum: BLACK wire
- 2 Maximum: RED wire
- 3 Common: Both WHITE wires

LEU 1 Float



LEU 2 Min and Max floats

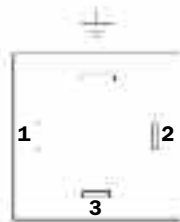


To invert the contact status from NO to NC and vice versa, simply invert the float.

1



Cut the tubes to the required length.



Wire the connector

2



Secure the level indicators to the connector support by means of the ferrule system (14 mm wrench).

Ordering information LEU

Electrical Float Level Indicators series

LEU

Example: LEU

1	2	3	4	5	6	7	8
<input type="checkbox"/>	<input type="checkbox"/>	<input type="checkbox"/>	<input type="checkbox"/>	<input type="checkbox"/>	<input type="checkbox"/>	<input type="checkbox"/>	<input type="checkbox"/>
A	1	A	1	A	F	S	P01

1 - Tube material

- A** Brass (only version 1 float)
- B** AISI 304 (only version 2 floats)

2 - Number of floats

- 1** Nr. 1 float
- 2** Nr. 2 floats

3 - Float material

- A** Nylon foam (only version 1 float)
- B** Eard rubber (only version 2 floats)
- C** AISI 316 (on request 2 floats)

4 - Contacts

- 1** NC

5 - Seals

- A** NBR

6 - Type of fixing

- F** 3 hole flange
- G** G 1" thread (only version 1 float)

7 - Electrical connection

- S** DIN 43650 connector

8 - Option

- P01** MP Filtri standard
- Pxx** On request



New Headquarters:

MP FILTRI S.p.A. Italy

Via 1° Maggio, n. 3
20060 Pessano con Bornago
(Milan) Italy
Tel. +39.02/95703.1
Fax +39.02/95741497-95740188
email: sales@mpfiltri.com
www.mpfiltri.com

**GREAT BRITAIN
MP FILTRI U.K. Ltd.**

Bourton Industrial Park
Bourton on the Water
Gloucestershire GL54 2HQ UK
Phone: +44.01451-822522
Fax: +44.01451-822282
email: sales@mpfiltri.co.uk
www.hydraulicparticlecounter.com
www.mpfiltri.com

**GERMANY
MP FILTRI Germany GmbH**

Hans - Wilhelmi - Straße 2
DE-66386 St. Ingbert
Phone: +49.(0)6894-95652-0
Fax: +49.(0)6894-95652-20
email: sales@mpfiltri.de
www.mpfiltri.com

**FRANCE
MP FILTRI FRANCE Sas**

Parc d'activités des Chanteraines
8 rue du Commandant d'Estienne
d'Orves, Immeuble D3
92396 Villeneuve la Garenne - France
Phone: +33(0)1.40.86.47.00
Fax: +33(0)1.40.86.47.09
email: sales@mpfiltrifrance.com
www.mpfiltri.com

USA

MP FILTRI USA Inc.

2055 Quaker Pointe Drive
Quakertown, PA 18951
Phone: +1.215-529-1300
Fax: +1.215-529-1902
email: sales@mpfiltriusa.com
www.mpfiltriusa.com

CANADA

MP FILTRI CANADA Inc.

8831 Keele Street, Concord,
Ontario L4K 2N1, Canada
Phone: +1.905-303-1369
Fax: +1.905-303-7256
email: mail@mpfiltricanada.com
www.mpfiltricanada.com

**RUSSIAN FEDERATION
ITALFILTRI**

Yuryevskiy Pereulok 13 a, Building 1
111020 Moscow, Russia
Phone/Fax: +7(495)220-94-60
email: mpfiltrirusia@yahoo.com
www.mpfiltri.ru

CHINA

MP FILTRI (Shanghai) Co. Ltd.

1280 Lianxi Road, 8 Bld - 2 Floor
Shanghai, Pudong
201204 P.R. China
Phone: + 86.21-58919916
Fax: + 86.21-58919667
email: sales@mpfiltrishanghai.com
www.mpfiltri.com

INDIA

MP FILTRI INDIA Pvt. Ltd.

Plot-7F, Raj Pinnacle
Beside RMZ Centennial,
Brookefield Road, Whitefield,
Bangalore 560048 - India
Phone: +91-80-4147 7444/4146 1444
Fax: +91-80-41461888
email: sales@mpfiltri.co.in
www.mpfiltri.com

AIR BREATHER FILTERS



The comprehensive series of breather filters makes it possible to meet all market demands. Metal and plastic styles suitable for use on mobile equipment are available.

The function of breather filters is to intercept environmental contamination.

The correct use of breather filters ensures longer life of filter cartridges installed in the hydraulic circuit, and in applications where high level of contamination are present.

The use of breather filters calls for the simultaneous installation of plugs for filling and topping up fluids; it is recommended to use plugs complete with basket for correct prefiltration of the fluid.

If the filler plug is equipped with a filter, the filtration degree must be the same as that of the breather filter.

Temperature

- from -25°C to +100°C

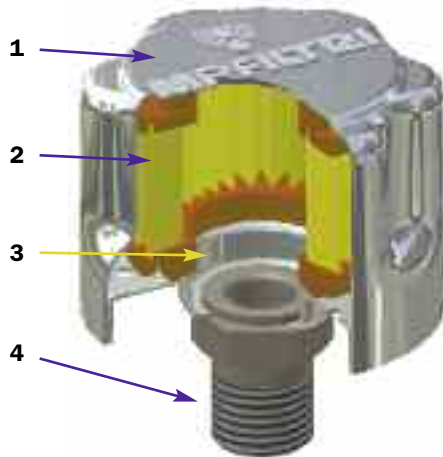
Compatibility

- NBR seals and Cork Gasket, compatible with:
Mineral oils to ISO 2943 - aqueous emulsions
Synthetic fluids, glycol water.
- FPM seals, compatible with:
Synthetic fluids type HS-HFDR-HFDS-HFDU.

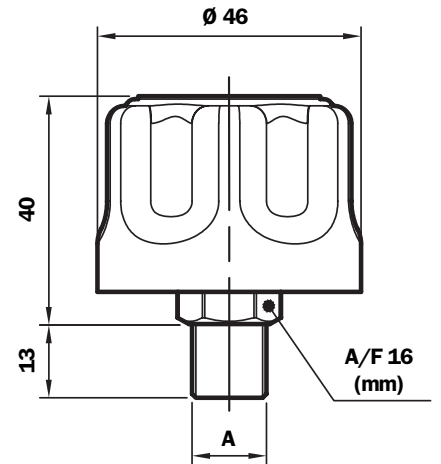
Dimensions

TA46G-N...P01

With filter



Threaded connection



TA46 G - N (Materials)

- 1 - Cover: Chrome plated steel
- 2 - Filter element: Impregnated paper
Polyurethane
- 3 - Flange: Galvanised Steel
- 4 - Threaded connection: Phosphated Steel

Flow rate with Δp : 0,02 bar

Filtration	l_N/min
3 μm	150
10 μm	200

Weight

TA 46: 0,110 kg

Connection	A
G	G 1/4"
N	1/4" NPT

Ordering information

Breather filter

	1	2	3
TA46	<input type="checkbox"/>	<input type="checkbox"/>	<input type="checkbox"/>
Example: TA46	G	03	P01

1 - Connection to reservoir

G	G 1/4"
N	1/4" NPT

3 - Options

P01	MP Filtri standard
------------	--------------------

2 - Filter element

03	3 μm - Impregnated paper
10	10 μm - Polyurethane

TA80.....P01

With filter



TA80.03.9P01

With anti-splash feature



TA80....1P01

With filter and pressurisation valve



Ordering information

Breather filter

TA80

Example: TA80

1	2	3	4	5
<input type="checkbox"/>	<input type="checkbox"/>	<input type="checkbox"/>	<input type="checkbox"/>	<input type="checkbox"/>
G	03	A	1	P01

1 - Connection to reservoir

<input type="checkbox"/>	G 3/4"
<input type="checkbox"/>	3/4" NPT

2 - Filter element

<input type="checkbox"/>	3 µm - Impregnated paper
<input type="checkbox"/>	10 µm - Polyurethane

3 - Seal

<input type="checkbox"/>	Without
<input type="checkbox"/>	NBR (pressurised only)

4 - Valves

<input type="checkbox"/>	Without
<input type="checkbox"/>	0,3 bar pressurisation valve
<input type="checkbox"/>	0,7 bar pressurisation valve
<input type="checkbox"/>	Anti-splash feature (only with filter element 3 µm)

5 - Options

<input type="checkbox"/>	P01 MP Filtri standard
--------------------------	------------------------

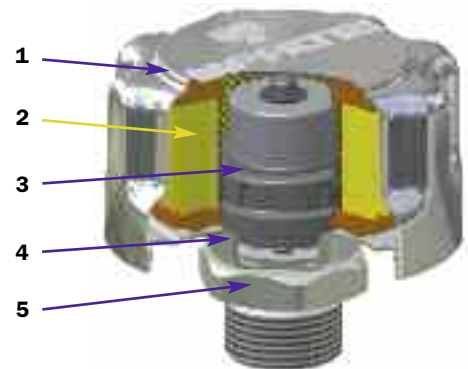
Flow rate with Δp : 0,02 bar

Filtration	I_N /min
3 µm	450
10 µm	550

Weight

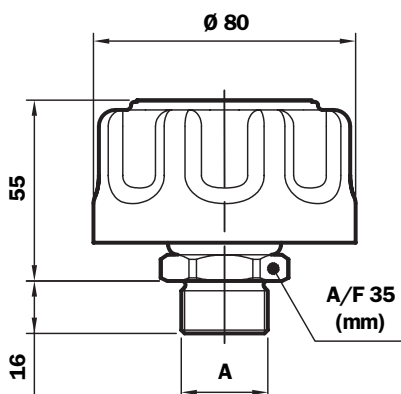
TA 80: 0,350 Kg

TA80



Dimensions

Threaded connection



Connection	A
G	G 3/4"
N	3/4" NPT

TA80 G (Materials)

- 1 - Cover: Chrome Plated Steel
- 2 - Filter element: Impregnated paper
Polyurethane
- 3 - Pressurisation valve: Nylon
Galvanised Steel
NBR
- 4 - Flange: Galvanised Steel
- 5 - Threaded connection: Galvanised Steel
- 6 - Anti-slosh feature: Galvanised Steel

Ordering information

Breather filter	1	2	3	4	5	6
TAP90	<input type="checkbox"/>	<input type="checkbox"/>	<input type="checkbox"/>	<input type="checkbox"/>	<input type="checkbox"/>	<input type="checkbox"/>
Exemple: TAP90	G	03	0	1	L	P01

1 - Connection to reservoir

G	M52x2
H	G 1 1/2"
L	G 1 1/4"
M	3/4" NPT
N	1" NPT
Q	G 3/4"

2 - Filter element

03	3 µm - Impregnated paper
10	10 µm - Polyurethane

3 - Seal

0	Without
A	NBR (pressurised)

4 - Pressurisation valve

0	Without
1	0,3 bar pressurisation valve
2	0,7 bar pressurisation valve

5 - Variants

0	Standard
A	With Dipstick
L	With Padlock tab
F	With Dipstick and Padlock tab

6 - Options

P01	MP Filtri standard
------------	--------------------



TAP90 (Materials)

- 1 - Cover/ringnut:** Nylon
- 2 - Breather filter:** Impregnated paper
Polyurethane
- 3 - Seal:** NBR

Flow rate with Δp: 0,02 bar

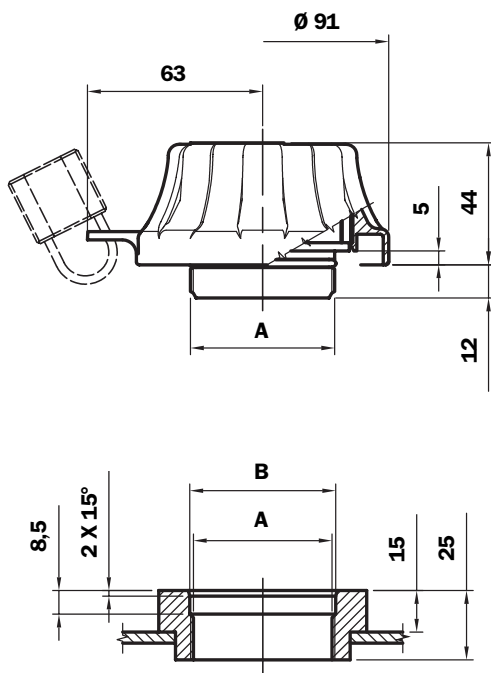
Filtration	I _N /min
3 µm	450
10 µm	550

Weight

TAP 90: 0,130 Kg

Dimensions

TAP 90 for connection on weld flange



	A	B
G	M52x2	Ø 52,5
H	G 1 1/2"	Ø 48,5
L	G 1 1/4"	Ø 42
M	3/4" NPT	-
N	1" NPT	-
Q	G 3/4"	-

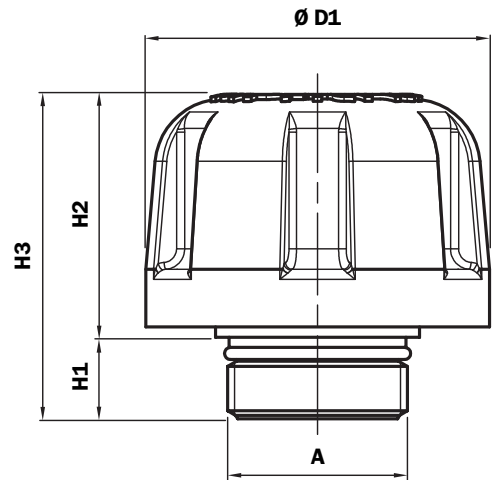
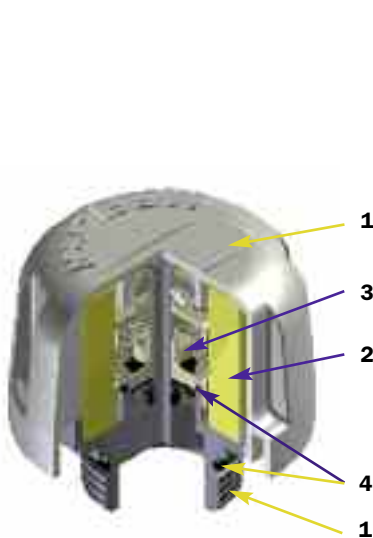
TAP G
With Pressurisation



TAP G
With Dipstick



Dimensions



SAP050 (Materials)

- 1 - Cover/Connection: Nylon
- 2 - Filter element: Impregnated paper
Polyurethane
- 3 - Pressurisation: Nylon
Galvanised steel
NBR
- 4 - Seal: NBR

Flow rate with Δp : 0,02 bar

Filtration I_N /min
10 μm 204

Weights

SAP 050: 0,040 kg

Connection to reservoir "A"

Type SAP 50				
G1	G2	G3	G4	G5
G 1/4"	G 3/8"	G 1/2"	G 3/4"	1/4" NPT
G6	G7	G8	G9	G10
3/8" NPT	1/2" NPT	3/4" NPT	SAE 6	SAE 12

Quantity per pack Number of Parts

SAP50	10
-------	----

Dimensions

Type SAP	D1	H1	H2	H3
50 G1				
50 G2				
50 G3				
50 G4	50,5	12	36	48
50 G5				
50 G6				
50 G7				
50 G8				
50 G9	50,5	14,5	35	50
50 G10				

Ordering information

Breather filter
SAP

1 2 3 4 5

Example: SAP50 G4 L10 A 0 P01

1 - Connection to reservoir

G1	G 1/4"
G2	G 3/8"
G3	G 1/2"
G4	G 3/4"
G5	1/4" NPT
G6	3/8" NPT
G7	1/2" NPT
G8	3/4" NPT
G9	SAE 6
G10	SAE 12

2 - Filter element

L03	3 μm - Impregnated paper
L10	10 μm - Polyurethane

3 - Seal

A	NBR
---	-----

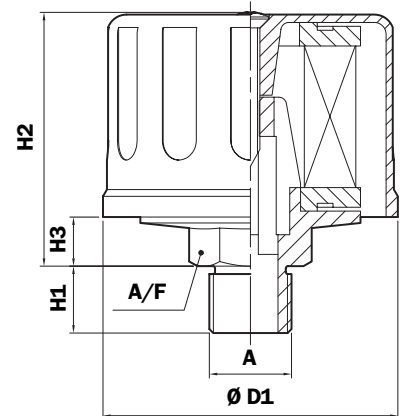
4 - Pressurisation valve

0	Without
1	Pressurisation valve 0,5 bar Only for connection: G2 - G3 - G4 - G6 G7 - G8 - G10

5 - Options

P01	MP Filtri standard
-----	--------------------

Dimensions



SAP 054 - 075 (Materials)

- 1 - Cover: Nylon
- 2 - Connection: Nylon
- 3 - Filter element: Impregnated paper

Weights

SAP 054: 0,060 Kg
SAP 075: 0,150 Kg

Flow rate with Δp : 0,02 bar

Filtration	I_N /min
SAP 054	
3 μ m	200
10 μ m	250
SAP 075	
3 μ m	350
10 μ m	400

Connection to reservoir " A "

Type SAP	G1	G2	G3	G4	G5
054	G 3/8"	G 1/2"	-	1/2" NPT	-
075	G 1/2"	G 3/4"	-	1/2" NPT	3/4" NPT

Dimensions

Type SAP	D1	H1	H2	H3	A/F (mm)
054 G1	54	13,5	51	8	22
054 G2					27
054 G4					
075 G1	75	17	64	9	32
075 G2					27
075 G4					
075 G5					

Ordering information

Breather filter

SAP

Example: SAP

1	2	3	4	5
<input type="checkbox"/>	<input type="checkbox"/>	<input type="checkbox"/>	<input type="checkbox"/>	<input type="checkbox"/>
075	G4	L10	A	P01

Filter element

Example:

1	3
<input type="checkbox"/>	<input type="checkbox"/>
A7	L10

1 - Size

Filter

054
075

Filter element

A4
A7

2 - Connection to reservoir

	SAP 054	SAP 075
G1	G 3/8"	G 1/2"
G2	G1/2"	G 3/4"
G3	-	-
G4	1/2" NPT	1/2" NPT
G5	-	3/4" NPT

3 - Filter element

L03	3 μ m - Impregnated paper
L10	10 μ m - Impregnated paper

4 - Seal

A	NBR
----------	-----

5 - Options

P01	MP Filtri standard
------------	--------------------

Series SAP 115

Nylon air breather filter

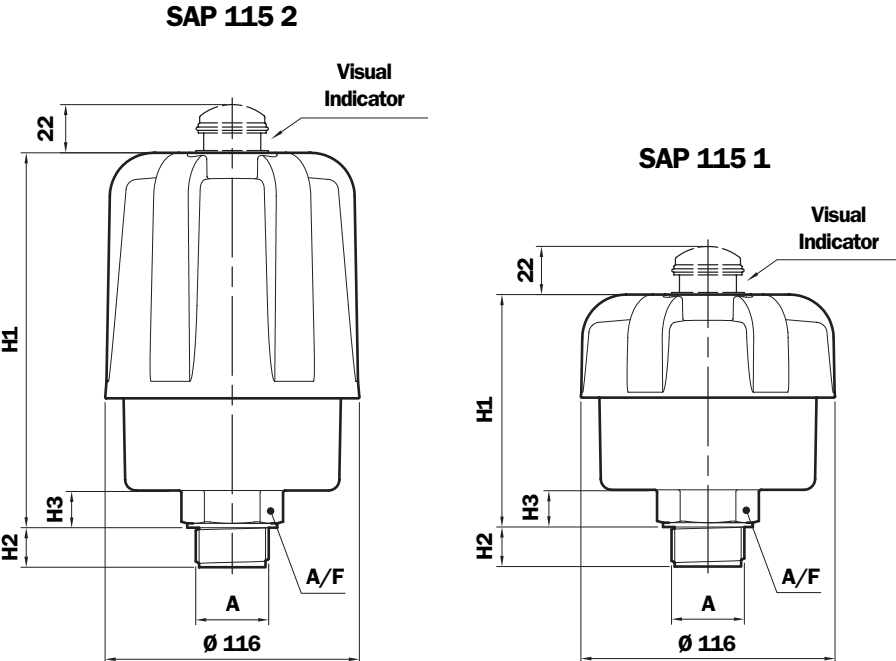


Clogging indicator
Set pressure: - 0.062 bar ± 10%
Manual reset

- SAP115 (Materials)**
- 1 - Cover: Nylon
 - 2 - Filter element: Microfibre
Impregnated paper
 - 3 - Connection: Nylon
 - 4 - Seals: NBR
FPM

Weight
 SAP 115 1: 0,410 Kg
 SAP 115 2: 0,525 Kg

Dimensions



SAP 115 1 - Dimension

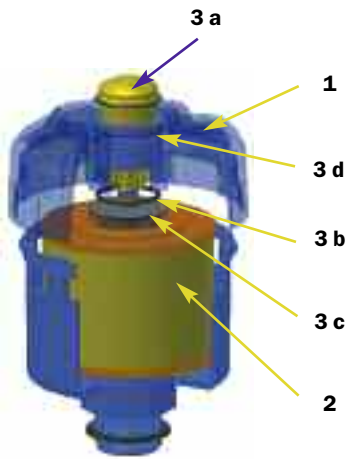
Connection	A	A/F	H1	H2	H3
A	G 1"	41	106	18	17
B	M33x2	41	106	18	17
C	G 1 1/2"	55	111	23	22

SAP 115 2 - Dimension

Connection	A	A/F	H1	H2	H3
A	G 1"	41	171	18	17
B	M33x2	41	171	18	17
C	G 1 1/2"	55	176	23	22

Flow rate with Δp: 0,02 bar

Connection	Filtration	l _v /min	
		SAP 115 1	SAP 115 2
G 1" M33x2	L10	2170	2800
	A03	1830	2800
G 1 1/2"	L10	2330	3000
	A03	1995	3000



TAP SAP 115 spare parts

Item.	Description	Q.ty	Filler cap series SAP 115	
1	Complete filler cap	1	See order table	
2	Filter Element	1	See order table	
3	Indicator kit	1	NBR 02005187	FPM 02005188
3a	Visual indicator	1	S62P01	
3b	Seal	1	O-R 3106 Ø 26,64 X 2,62	
3c	Indicator securing screw	1	01022670	
3d	O-R indicator	1	O-R 2112 Ø 28,3 x 1,78	

Changing the filter element in SAP 115 series filler caps

- 1 Thoroughly clean the filler cap and adjacent parts.
- 2 Unscrew and raise the cover.
- 3 Replace the filter element.
- 4 Screw the cover.



Ordering information

Breather filter
SAP115
Example: SAP115

1	2	3	4	5	6	7
2	A	A03	A	1	B	P01

Filter element
A115
Example: A115

1	3	7
2	A03	P01

1 - Length

1
2

2 - Connection

A	G 1"
B	M33x2
C	G 1 1/2"

3 - Filter element

A03	3 µm - Microfibre
L10	10 µm - Impregnated paper

4 - Seal

A	NBR
V	FPM

5 - Variants

0	Standard
1	With anti-splash feature

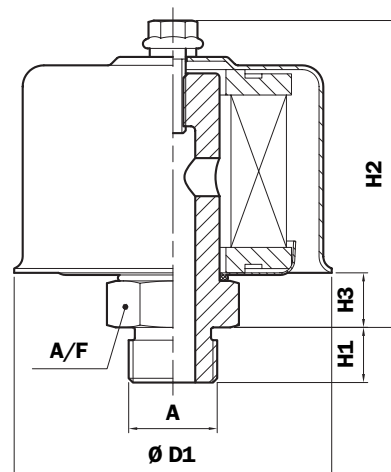
6 - Clogging indicator

A	Without
B	Visual indicator

7 - Options

P01	MP Filtri standard
-----	--------------------

Dimensions



SA (Materials)

- 1 - Screw: Galvanised Steel
- 2 - Washer: Teflon
- 3 - Cover: Steel
- 4 - Filter element: Impregnated paper
- 5 - Ring: Galvanised Steel
- 6 - Seal: NBR
- 7 - Connection: Anodised Aluminium
Galvanised Steel

Dimension

Type	D1	H1	H2	H3	A/F (mm)
036	36	13	36,5	9	22
053	53	13	52,5	7	22
075 G1		13			27
075 G2	75	17	68,5	11,5	32
075 G4		15			27
075 G5		20			32
115	115	17	80	11	38
145	145	25	115	13	55
185	185	25	164	23	80

Flow rate with Δp : 0,02 bar

Weight

- SA 036: 0,080 Kg
- SA 053: 0,150 Kg
- SA 075: 0,260 Kg
- SA 115: 0,400 Kg
- SA 145: 0,590 Kg
- SA 185: 1,220 Kg

Type	Flow rate l_N/min	
	3 μm	10 μm
036	140	140
053	250	250
075	350	400
115	800	850
145	1800	1850
185	2300	2500

Connection to reservoir "A"

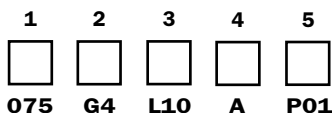
Type	G1	G2	G3	G4	G5	G6
036	G 1/4"	G 3/8"	G 1/2"	1/4" NPT	3/8" NPT	1/2" NPT
053	G 1/4"	G 3/8"	-	1/4" NPT	3/8" NPT	-
075	G 1/2"	G 3/4"	-	1/2" NPT	3/4" NPT	-
115	G 1"	-	-	1" NPT	-	-
145	G 1 1/2"	-	-	1 1/2" NPT	-	-
185	G 2 1/2"	-	-	2 1/2" NPT	-	-

Ordering information

Breather filter

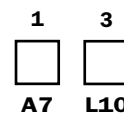
SA

Example: SA



Filter element

Example:



1 - Size

Filter	Filter element
036	A05
053	A5
075	A7
115	A8
145	A10
185	A11

2 - Connection to reservoir

Type	G1	G2	G3	G4	G5	G6
036	G 1/4"	G 3/8"	G 1/2"	1/4" NPT	3/8" NPT	1/2" NPT
053	G 1/4"	G 3/8"	-	1/4" NPT	3/8" NPT	-
075	G 1/2"	G 3/4"	-	1/2" NPT	3/4" NPT	-
115	G 1"	-	-	1" NPT	-	-
145	G 1 1/2"	-	-	1 1/2" NPT	-	-
185	G 2 1/2"	-	-	2 1/2" NPT	-	-

3 - Filter element

L03	3 μm - Impregnated paper
L10	10 μm - Impregnated paper
S	Without

4 - Seal

A	NBR
---	-----

5 - Options

P01	MP Filtri standard
-----	--------------------

Flow rate with Δp : 0,02 bar



SCS XXX C

Type	Filtration I _N /min	
	P10	A03
SCS 050	P10	550
	A03	515
	A10	530
SCS 070	P10	550
	A03	515
	A10	530
SCS 100	P10	1415
	A03	1300
	A10	1330
SCS 150	P10	1415
	A03	1300
	A10	1330



SCS XXX F

SCS (Materials)

Riser: Galvanised Steel

Weight

SCS050...G1: 0,200 Kg
 SCS050...G2: 0,265 Kg
 SCS100...G1: 0,450 Kg
 SCS100...G2: 0,645 Kg

Weight

CS/CG050: 0,73 Kg
 CS/CG070: 0,95 Kg
 CS100: 1,3 Kg
 CS150: 1,6 Kg
 CG100: 1,3 Kg
 CG150: 1,6 Kg

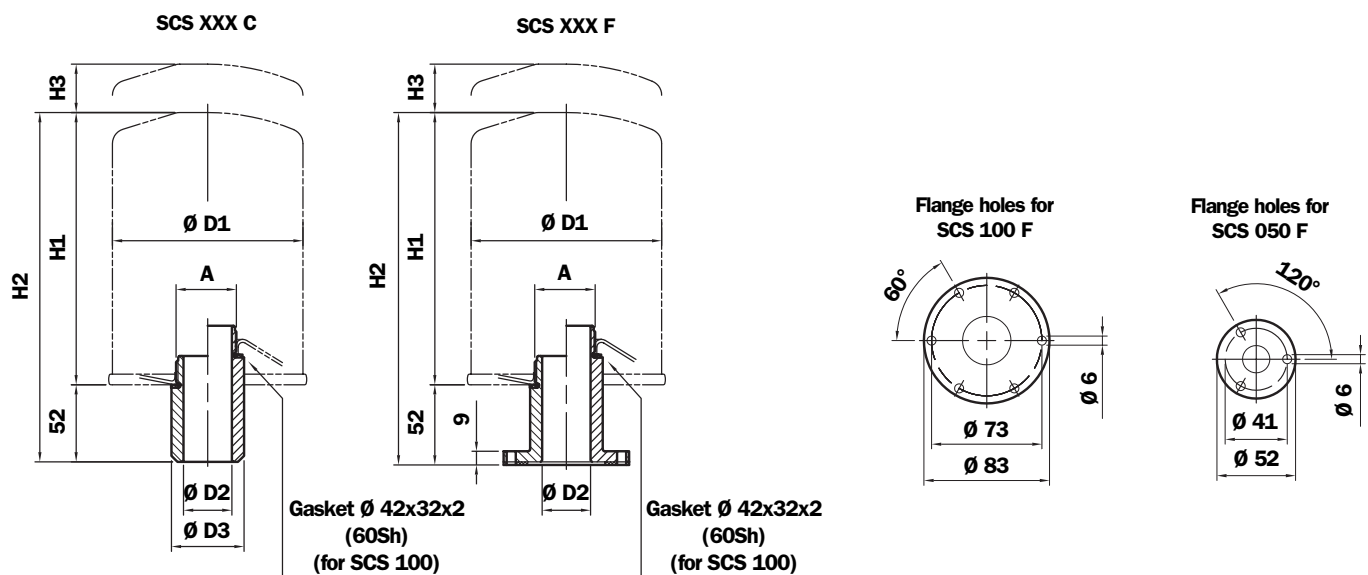
Dimensions SCS - CS - CG

Type	D1	H1	H2	H3
CS/CG050	96	143	195	20
CS/CG070	96	210	262	20
CS100	129	180	232	25
CS150	129	220	272	25
CG100	129	180	232	30
CG150	129	265	317	30

SCS Riser dimensions

Type	A	D2	D3
SCS050...G1	G 3/4"	18	32
SCS050...G2	1" 12 UN	18	32
SCS100...G1	G 1 1/4"	32	48
SCS100...G2	1 1/2" 16 UN	32	48

Dimensions



Ordering information

Breather filter	2	3	4	5	6	7
SCS	<input type="checkbox"/>	<input type="checkbox"/>	<input type="checkbox"/>	<input type="checkbox"/>	<input type="checkbox"/>	<input type="checkbox"/>
Example: SCS	050	F	G1	A10	A	P01
Riser only						
SCS	<input type="checkbox"/>	<input type="checkbox"/>	<input type="checkbox"/>	<input type="checkbox"/>	<input type="checkbox"/>	<input type="checkbox"/>
Example: SCS	050	F	G1	A	P01	
Filter element	1	2	5	6	7	
Example:	CS	050	A10	A	P01	

1 - Filter element type

- CS** Connection ISO 228 for SCS.....G1
- CG** Connection A.S.A. for SCS.....G2

2 - Size

- 050**
- 070** Riser assembly excluded
- 100**
- 150** Riser assembly excluded

3 - Connection to reservoir

- C** Weld riser
- F** Flange riser

4 - Threaded connection

- G1** G 3/4" for SCS 050/070
G 1 1/4" for SCS 100/150

G1 with filter elements series CS

- G2** 1" - 12 UNF for SCS 050/070
1-1 1/2" UN for SCS 100/150

G2 with filter elements series CG

5 - Filter element

- A03** 3 µm - Microfibre
- A10** 10 µm - Microfibre
- P10** 10 µm - Impregnated paper

6 - Seal

- A** NBR
- V** FPM

7 - Options

- P01** MP Filtri standard

FILLER CAPS



The series TK range of filler caps is composed of styles with breather filter, dipstick for measuring the reservoir fluid level and anti-splash fins to prevent spillage of oil from the reservoir on mobile equipment.

Temperature

- from -25 °C to +100 °C

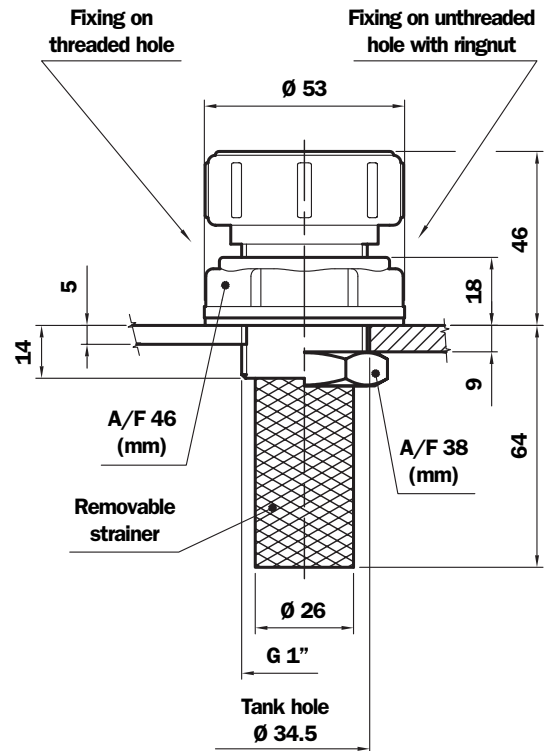
Compatibility

- Mineral oils to ISO 2943 - aqueous emulsions
Synthetic fluids, glycol water.

TC50G1.....P01
Threaded reservoir



Dimensions



TC50GA.....P01
Unthreaded hole in reservoir



TC50 ((Materials))

- 1 - Cover: Nylon
- 2 - Filter element: Galvanised Steel
- 3 - Filler cap: Nylon
- 4 - Strainer: Galvanised Steel/Nylon
AISI 304 Nylon
- 5 - Collar: Nylon
- 6 - Seal: Inorganic fibre
- 7 - Ringnut: Phosphated Steel

Weight

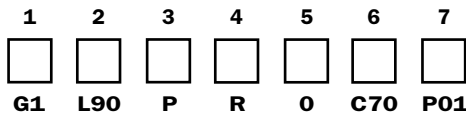
- TC 50 G1: 0,070 Kg
- TC 50 GA: 0,100 Kg

Ordering information

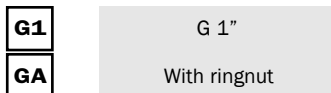
Filler cap

TC50

Example: TC50



1 - Connection



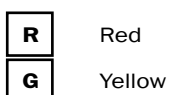
2 - Filter element



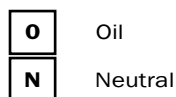
3 - Seal



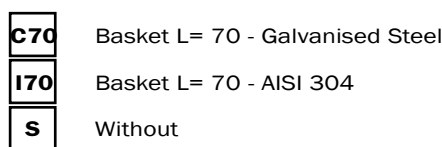
4 - Cover colour



5 - Cover wording



6 - Basket

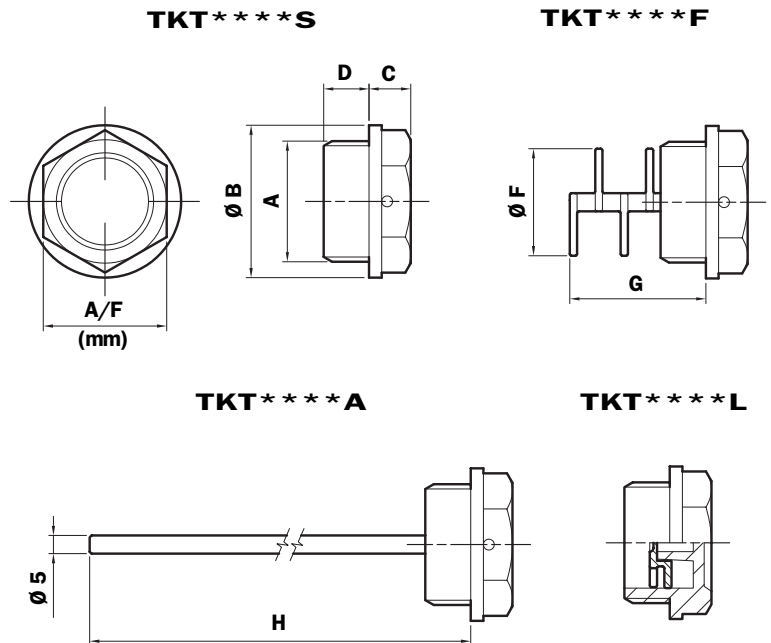


7 - Options





Dimensions



TKT (Materials)

- 1 - Body: Nylon
- 2 - Seals: NBR
Inorganic fibre
- 3 - Labyrinth: Nylon
- 4 - Anti-splash feature: Nylon
- 5 - Dipstick: Phosphated Steel

Quantity per pack Number of Parts

TKT 25

Size	A	Ø B	C	A/F (mm)	D	Ø F	G	H
G13	G 1/4"	20	7	17	9	-	-	206
G16	G 3/8"	22	8	18	10	13,5	33	207
G20	G 1/2"	28	8	22	11	17,5	34	208
G26	G 3/4"	35	9	27	12	23,5	35	209
G33	G 1"	42	11,5	34	12,5	29,5	37,5	202,5
G42	G 1 1/4"	52	12	42	13	38	40	203
G48	G 1 1/2"	58	14	47	13	38	38	203
G60	G 2"	74	14	64	20	-	-	200

N.B. Seals thickness 2 mm.

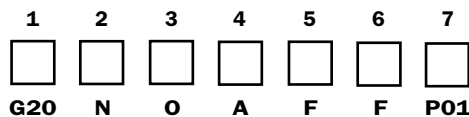
Recommended tightening torque 10 ± 15 Nm.

Ordering information

Filler cap

TKT

Example: TKT



1 - Size

G13	G 1/4"
G16	G 3/8"
G20	G 1/2"
G26	G 3/4"
G33	G 1"
G42	G 1 1/4"
G48	G 1 1/2"
G60	G 2"

2 - Colour

N	Black nylon
---	-------------

48

3 - Cover wording

N	Neutral
O	Oil

4 - Seal

A	NBR x TKT***F and TKT***A
B	Fibre inorganique x TKT***S and TKT***L

5 - Style

S	Without breather
F	Breather hole

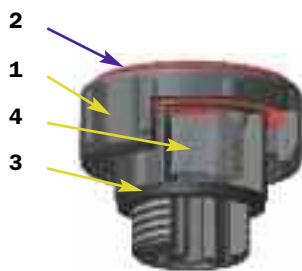
6 - Accessories

S	Without
A	Standard dipstick
F	Anti-splash feature (except G13-G60)
L	Labyrinth filter (except G33-G42-G48-G60)

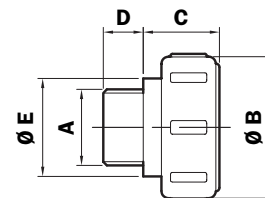
7 - Options

P01	MP Filtri standard
-----	--------------------

Dimensions

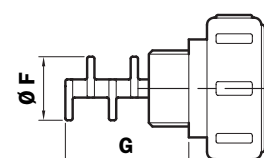
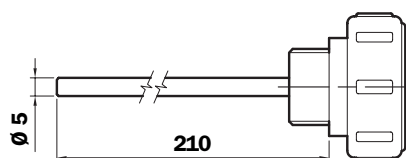


TSD****S



TSD****A

TSD****F



TSD (Materials)

- 1 - Body: Nylon
- 2 - Cover: Nylon
- 3 - Seal: NBR
- 4 - Filter: Galvanised steel
- 5 - Anti-splash feature: Nylon
- 6 - Dipstick: Phosphated Steel

**Quantity per pack
Number of Parts**

TSD 25

Size	A	Ø B	C	D	Ø E	Ø F	G
G16	G 3/8"	35	21	10	23	13,5	36
G20	G 1/2"	39	21	11	27	17,5	36
G26	G 3/4"	45	21	12	33	23,5	37
G33	G 1"	51	24,5	13	39	29,5	44
G42	G 1 1/4"	66	29,5	14	54	38	47
G48	G 1 1/2"	66	29,5	14	54	38	47

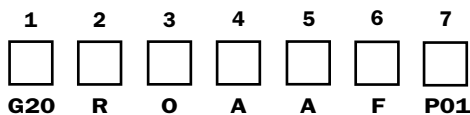
N.B. Seals thickness 2 mm.
Recommended tightening torque 10+15 Nm.

Ordering information

Filler cap

TSD

Example: TSD



1 - Size

G16	G 3/8"
G20	G 1/2"
G26	G 3/4"
G33	G 1"
G42	G 1 1/4"
G48	G 1 1/2"

2 - Cover colour

R	Red
Y	Yellow

3 - Cover wording

N	Neutral
O	Oil
G	Gasoil

4 - Seal

A	NBR
----------	-----

5 - Filter element

A	Steel (excepté "Gasoil")
O	Without

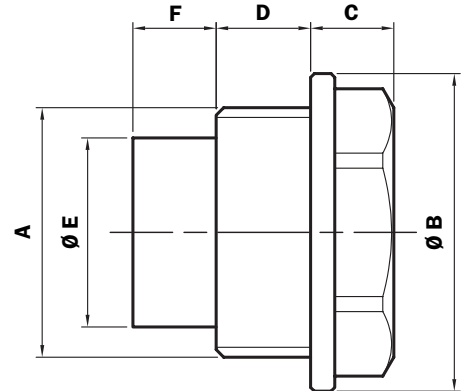
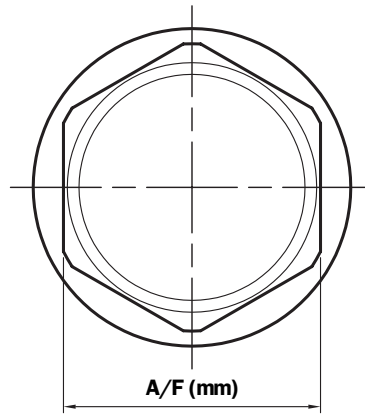
6 - Accessories

S	Without
A	Standard dipstick
F	Anti-splash feature

7 - Options

P01	MP Filtri standard
------------	--------------------

Dimensions



TKM (Materials)

Body: Aluminium

Seal: Inorganic fibre

Temperature

- from -25 °C to +100 °C

Compatibility

- Only mineral oils to ISO 2943

Size	A	Ø B	C	D	Ø E	F	A/F (mm)
G13	G 1/4"	19	4,5	7	9,5	6	15
G16	G 3/8"	22	8	9	8	6	18
G20	G 1/2"	28	8	9	10	8	22
G26	G 3/4"	35	9	10	12	11	27
G33	G 1"	42	11	12,5	25	11	37

N.B. Seals thickness 2 mm.

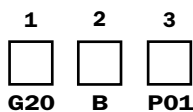
Recommended tightening torque 10÷15 Nm.

Ordering information

Filler cap

TKM

Example: TKM



1 - Size

G13	G 1/4"
G16	G 3/8"
G20	G 1/2"
G26	G 3/4"
G33	G 1"

2 - Seal

B Inorganic fibre

3 - Options

P01 MP Filtri standard

OIL FILLER AND AIR BREATHER FILLER CAPS



The complete series of oil filter and breather filler caps makes it possible to meet all market demands.

Metal and plastic styles suitable for use on mobile equipment are available.

Filler caps perform a dual function, air filtration at the tank inlet and prefiltration of the fluid by means of the basket, in order to prevent the ingress of foreign material into the tank during filling and top-up operations.

Correct operation of breather filters makes for longer life of the filter cartridges installed in the hydraulic circuit, and in applications where high level of contamination are present.

Temperature

- from -25 °C to +100 °C

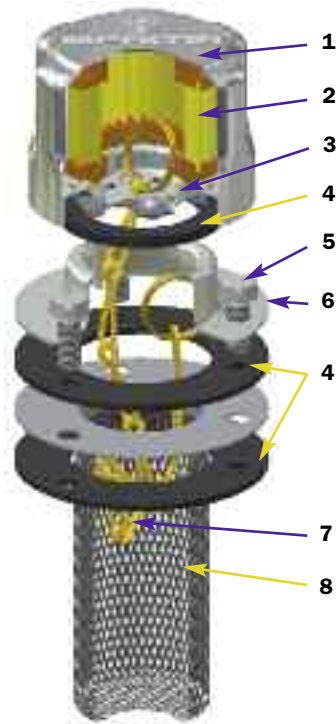
Compatibility

- NBR seals and Cork Gasket, compatible with:
Mineral oils to ISO 2943 - aqueous emulsions
Synthetic fluids, glycol water.
- FPM seals, compatible with:
Synthetic fluids type HS-HFDR-HFDS-HFDU.

Metal oil filler and air breather filler caps

Series TA 46

Dimensions



TA46 B (Materials)

- 1 - Cover: Chrome Plated Steel
- 2 - Filter element: Impregnated paper
Polyurethane
- 3 - 6 - Flange: Galvanised Steel
- 4 - Seals: NBR
Cork Gasket
- 5 - Screws: Galvanised Steel
- 7 - Chain, ring: Brass
- 8 - Basket: Galvanised Steel

Flow rates with Δp : 0,02 bar

Filtration	l/min
3 μ m	150
10 μ m	200

Weight

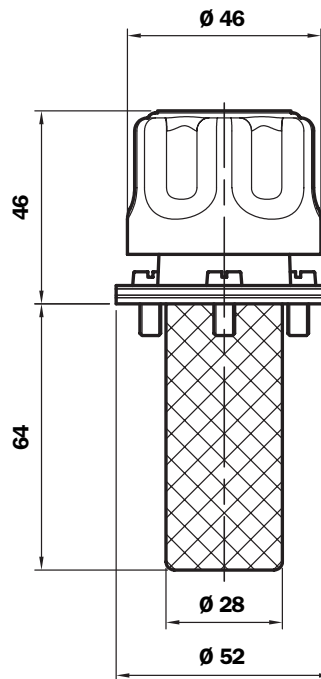
TA 46: 0,100 kg

TA 46 B

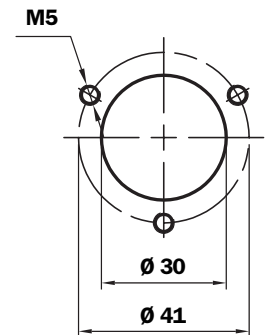
Bayonet connection
Non-removable strainer



Bayonet connection



Reservoir holes

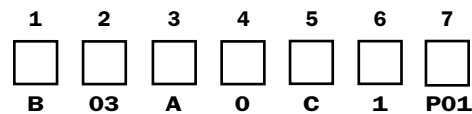


Ordering information

Filler cap

TA46

Example: TA46



1 - Connection to reservoir

- B** Flange with bayonet connection

2 - Filter element

- 03** 3 μ m - Impregnated paper
- 10** 10 μ m - Polyurethane

3 - Seal

- A** NBR
- B** Cork gasket

4 - Valves

- 0** Without valves

5 - Variants

- 0** Standard
- C** With chain

6 - Basket

- 0** Without
- 1** L= 65 mm

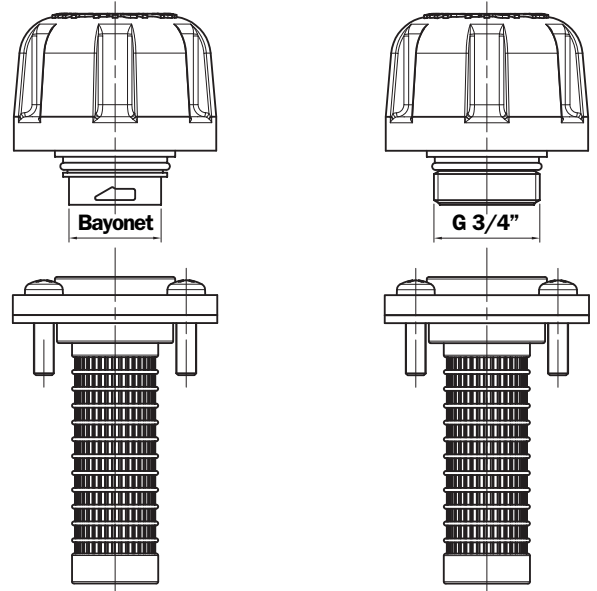
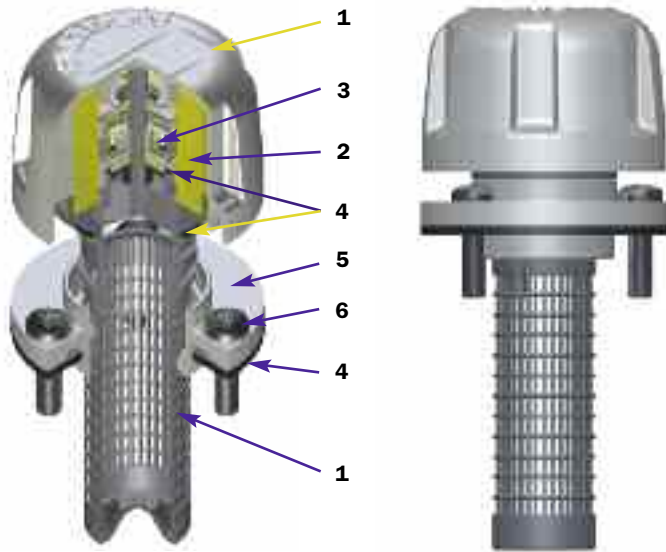
7 - Options

- P01** MP Filtri standard

Series TAP 50

Nylon oil filler and air breather filler caps

Dimensions



TAP50 (Materials)

- 1 - Cover/ringnut: Nylon
- 2 - Filter element: Impregnated paper
Polyurethane
- 3 - Pressurisation valve: Nylon
Galvanised Steel
NBR
- 4 - Seal: NBR
- 5 - Flange: Nylon
- 6 - Screws: Galvanised Steel
- 7 - Basket: Nylon

Flow rates with Δp : 0,02 bar

Filtration	l/min
10 μ m	202

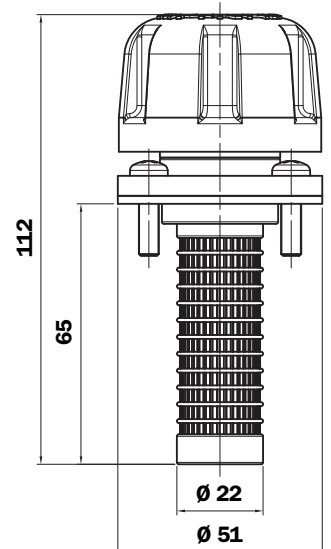
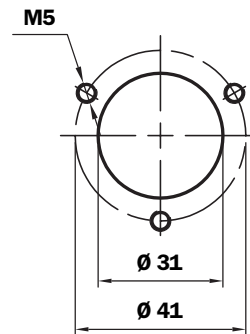
Quantity per pack Number of Parts

TAP50	10
-------	----

Weight

TAP50: 0,060 kg

Reservoir holes



Ordering information

Filler cap

TAP50

Example: TAP50 **B** **10** **A** **0** **1** **P01**

1 - Connection to reservoir

- B** Flange with bayonet connection
- C** Flange with bayonet connection G 3/4"

2 - Filter element

- 03** 3 μ m - Impregnated paper
- 10** 10 μ m - Polyurethane

3 - Seal

- A** NBR

4 - Valves

- 0** Without
- 1** 0,5 bar pressurisation valve

5 - Basket

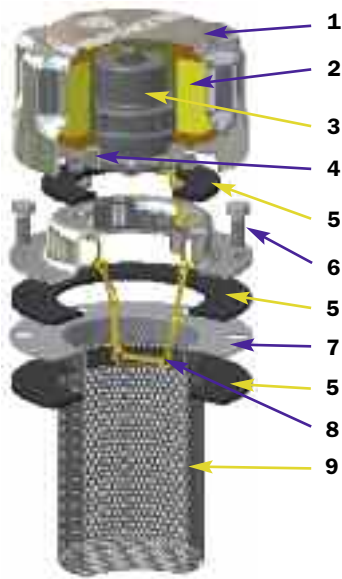
- 1** L= 65 mm

6 - Options

- P01** MP Filtri standard

Series TA 80

Metal oil filler and air breather filler caps



TA80 B/D (Materials)

- 1** - Cover: Chrome Plated Steel
- 2** - Filter element: Impregnated paper
Polyurethane
- 3** - Pressurisation valve:
Bodies: Nylon
- End cap-disk: Galvanised Steel
- Spring: Steel
- Seals: NBR
- 4** - Flange and anti-splash feature: Galvanised Steel
- 5** - Seals: Cork Gasket
NBR
- 6** - Screws: Galvanised Steel
- 7** - Flange: Galvanised Steel
- 8** - Chain, ring: Brass
- 9** - Basket TA80B: Galvanised Steel

Flow rates with Δp : 0,02 bar

Filtration	l/min
3 μ m	450
10 μ m	550

Weight

Strainer L 80 mm:	0,330 Kg
Strainer L 150 mm:	0,350 Kg

TA 80 B

Bayonet connection
Non-removable basket



TA 80 B

Bayonet connection
With Padlock tab



TA 80 D

Bayonet connection
Removable basket



TA80B00....P01

Bayonet connection
Closed filler cap without
filter element



TA80B10....P01

Bayonet connection
Filler cap with filter
element



TA80B03.9..P01

Bayonet connection
Filler cap with anti-splash
feature and filter element



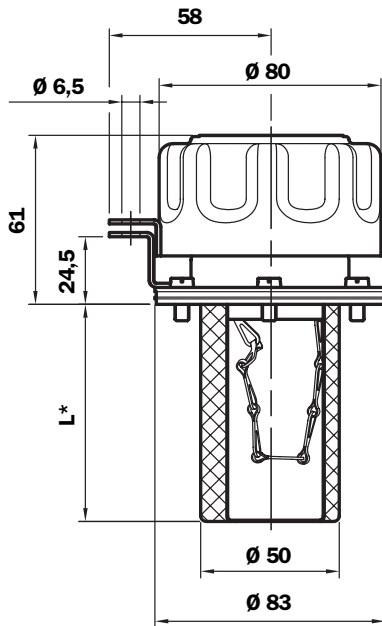
TA80B10.1..P01

Bayonet connection
Filler cap with
pressurisation valve
and filter element

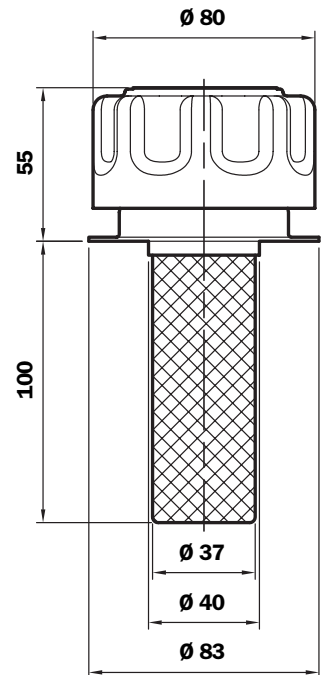


Dimensions

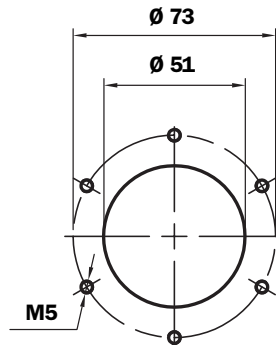
Bayonet connection



Weld flange



Reservoir holes

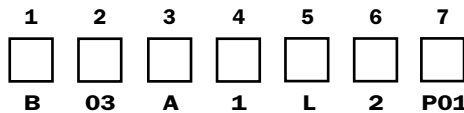


Ordering information

Filler cap

TA80

Example: **TA80**



1 - Connection to reservoir

- B** Flange with bayonet connection
- D** Weld flange

2 - Filter element

- 00** Without filter (Blank filler cap)
- 03** 3 µm - Impregnated paper
- 10** 10 µm - Polyurethane

3 - Seal

- A** NBR
- B** Cork gasket

4 - Valves

- 0** Without
- 1** 0,3 bar pressurisation valve (only with seals NBR)
- 2** 0,7 bar pressurisation valve (only with seals NBR)
- 9** Anti-splash feature (only with filter element 3 µm)

5 - Variants

- 0** Standard
- L** With Padlock tab (B versions only)

6 - Basket

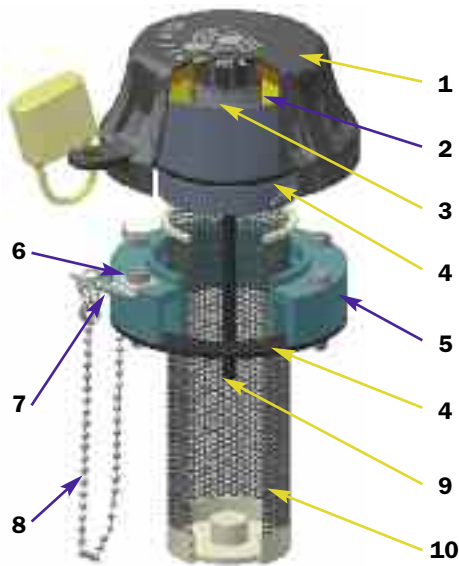
- 0** Without
- 1** *L= 80 mm (B versions only)
- 2** *L= 150 mm (B versions only)
- 3** *L= 100 mm (D versions only)

7 - Options

- P01** MP Filtri standard

Series TAP 90

Nylon oil filler and air breather filler caps



TAP90 (Materials)

- 1 - Cover/ringnut: Nylon
- 2 - Filter element: Impregnated paper
Polyurethane
- 3 - Pressurisation valve: Nylon
Galvanised Steel
NBR
- 4 - Seal: NBR
- 5 - Flange B: Nylon
- 6 - Screws: Galvanised Steel
- 7 - Padlock tab: Galvanised Steel
- 8 - Chain, ring: Brass
- 9 - Dipstick: Phosphated Steel
- 10 - Basket: Galvanised Steel/Nylon

Flow rate with Δp : 0,02 bar

Filtration	l/min
3 μm	450
10 μm	550

Weight

Basket L 120 mm:	0,250 Kg
Basket L 250 mm:	0,310 Kg

TAP90 B.....
Flange with
bayonet connection



External chain

TAP90 R.....
Flange with
M52x2 connection



Internal chain

TAP90 F.....
Flange with spigot
DIN 24557 Connection
M52x2



Internal chain

TAP90 C.....
Weld riser
Connection M52x2



Weld riser in
Galvanised Steel,
internal chain

TAP90 B-C-R-F
With dipstick



TAP90 B-C-R-F
Closed filler cap without
filter element



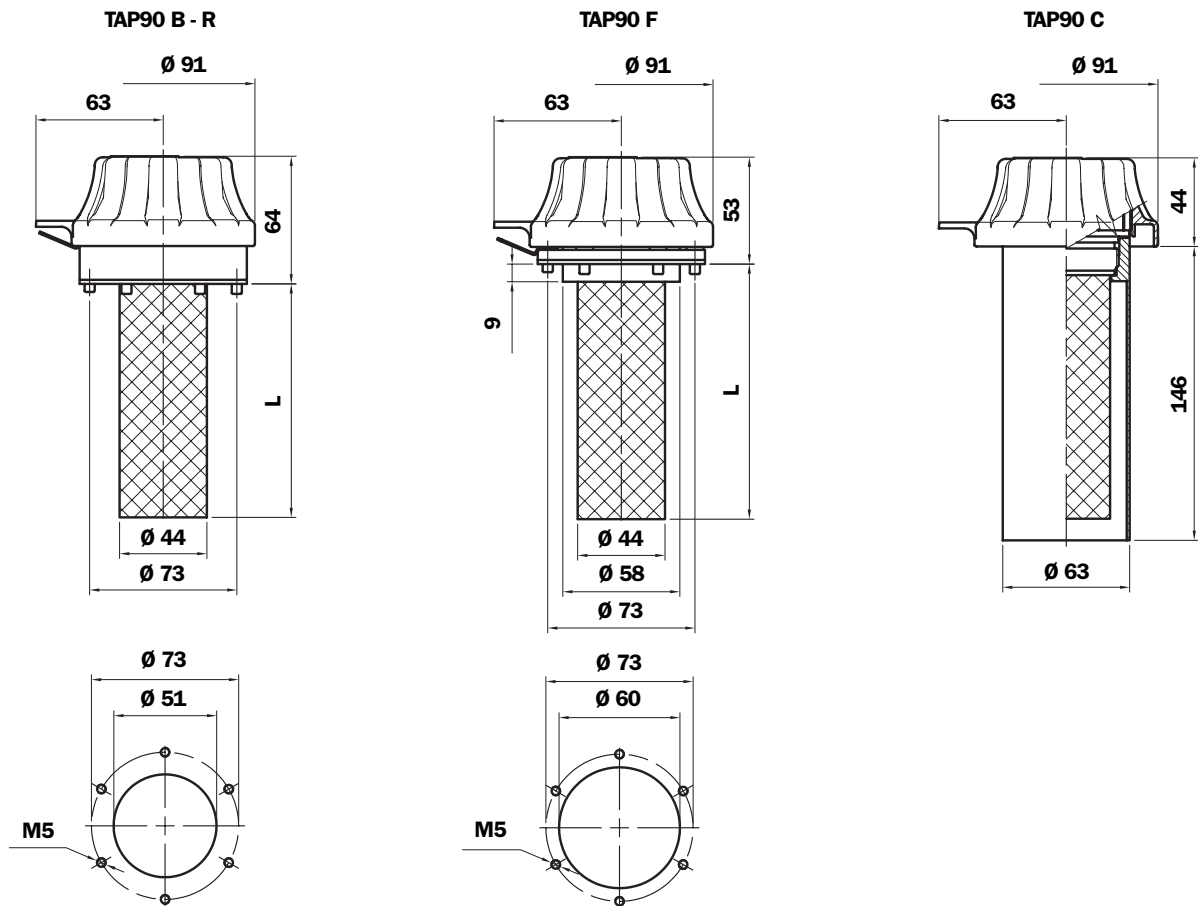
TAP90 B-C-R-F
Filler cap with filter
element



TAP90 B-C-R-F
Filler cap with
pressurisation valve



Dimensions



Ordering information

Filler cap
TAP90
Example: TAP90

1	2	3	4	5	6	7
<input type="checkbox"/>	<input type="checkbox"/>	<input type="checkbox"/>	<input type="checkbox"/>	<input type="checkbox"/>	<input type="checkbox"/>	<input type="checkbox"/>
B	03	A	1	0	5	P01

1 - Connection to reservoir

- B** Flange with bayonet connection
- C** Weld riser (M52X2 version only)
- F** Flange with threaded M52x2 connection Spigot \varnothing 60 (DIN 24557)
- R** Flange with M52X2 threaded connection

2 - Filter element

- 00** Without filter (Blank filler cap)
- 03** 3 μ m - Impregnated paper
- 10** 10 μ m - Polyurethane

3 - Seal

- A** NBR

4 - Valves

- 0** Without
- 1** 0.3 bar pressurisation valve
- 2** 0.7 bar pressurisation valve

5 - Variantes

- 0** Standard
- L** With Padlock tab
- A** With Dipstick
- C** With Chain external for connection **B**
With Chain internal for connection **C-F-R** (with basket only)
- D** With Padlock tab and chain external for connection **B**
With Padlock tab and chain internal for connection **C-F-R** (with basket only)
- E** Dipstick and chain external (only connection **B**)
- F** Dipstick and Padlock tab
- G** Dipstick, Padlock tab and chain external (only connection **B**)

6 - Basket (Stainless steel basket on request)

- 0** Without
- 1** L= 120 mm
- 3** L= 250 mm

In the version with chain the L= 120 basket features a press fitting.

7 - Options

- P01** MP Filtri standard

Series TAP 114

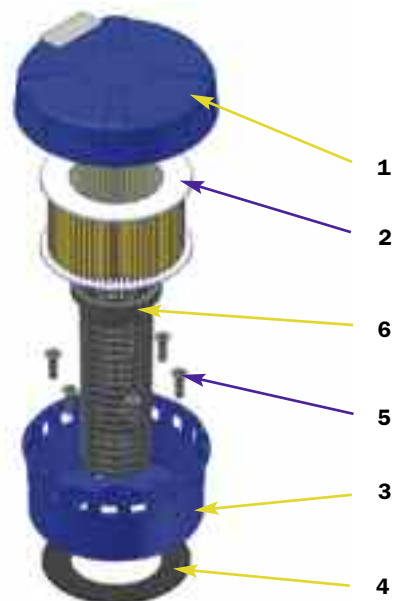
Nylon oil filler and air breather filler caps



**Example
TAP114
Length 1**



**Example
TAP114
Length 2**

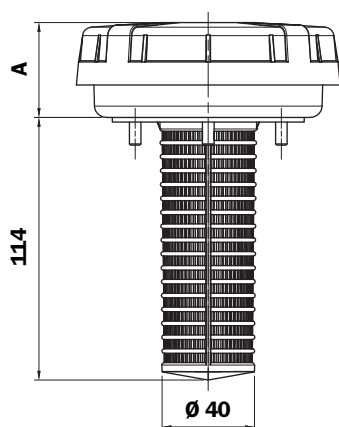


TAP114 (Materials)

- 1 - Cover: Nylon
- 2 - Filter element: Impregnated paper
- 3 - Flange: Nylon
- 4 - Seal: NBR
- 5 - Screws: Galvanised Steel
- 6 - Basket: Nylon

Dimensions

TAP 114



Length	A
1	41
2	56
3	68

Flow rates with Δp : 0,02 bar

Length 1

Filtration	l/min
10 μm	1450

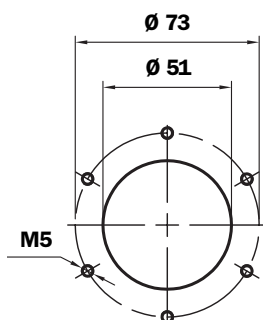
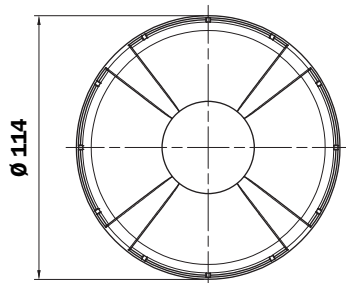
Length 2

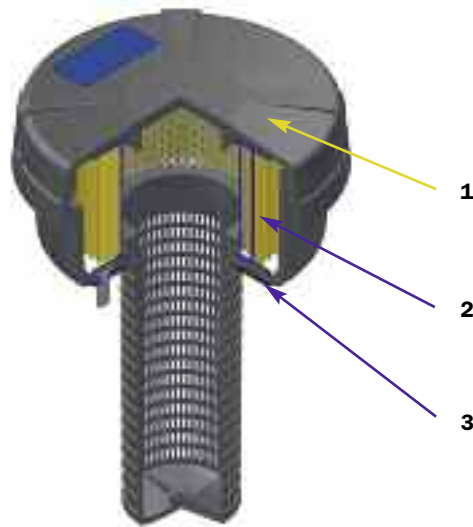
Filtration	l/min
10 μm	1600

Weight

TAP 114 1: 0,185 Kg
TAP 114 2: 0,200 Kg

**Reservoir
holes**





TAP 114 spare parts

Item.	Description	Q.ty	Filler cap series TAP 114	
1	Complete filler cap	1	See order table	
2	Filter Element	1	See order table	
3	Seal	1	NBR 01026306	FPM 01026332

Ordering information

Filler cap
TAP114

1	2	3	4	5
<input type="checkbox"/>	<input type="checkbox"/>	<input type="checkbox"/>	<input type="checkbox"/>	<input type="checkbox"/>

Example: TAP114 3 L10 A 1 P01

Filter element
A114

1	2	3
<input type="checkbox"/>	<input type="checkbox"/>	<input type="checkbox"/>

Example: TAP114 3 L10 P01

1 - Length

1
2
3

2 - Filter element

L10 10 µm - Impregnated paper

3 - Seal

A NBR

4 - Basket

1 L= 114 mm

5 - Options

P01 MP Filtri standard

Series TAP 115

Nylon oil filler and air breather filler caps



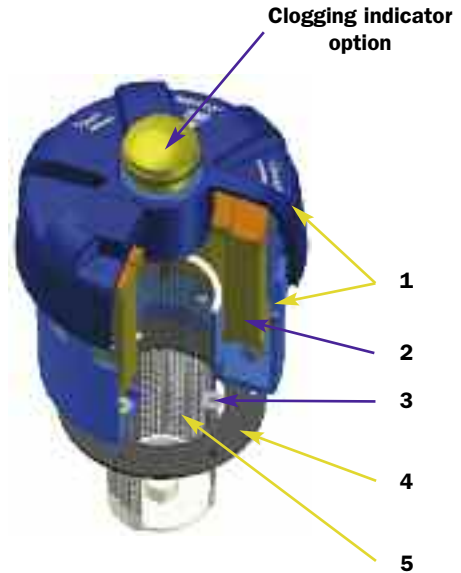
Example
TAP115

Length 1
Without indicator



Example
TAP115

Length 2
With indicator



TAP115 (Materials)

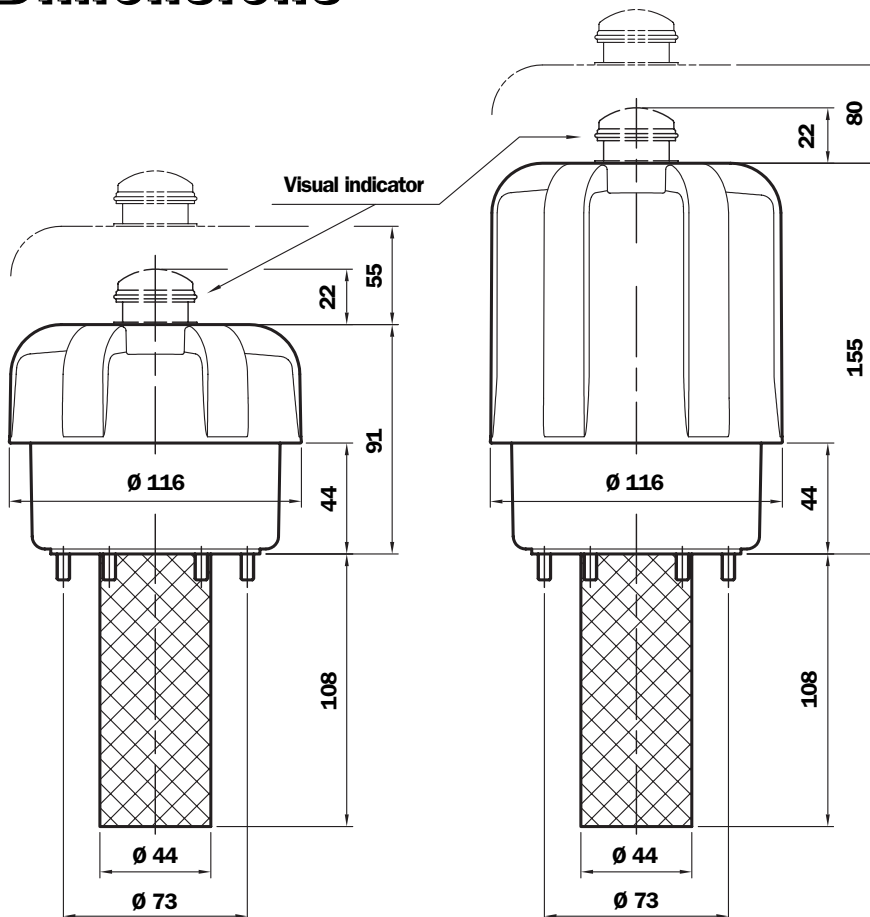
- 1 - Cover/Flange: Nylon
- 2 - Filter element: Microfibre Impregnated paper
- 3 - Seals: NBR
FPM
- 4 - Screws: Galvanised Steel
- 5 - Basket: Galvanised Steel/Nylon

Clogging indicator

Set pressure: - 0,062 bar ± 10 %

Manual reset

Dimensions



Flow rates with Δp : 0,02 bar

Length 1

Filtration	l/min
3 μ m	1600
10 μ m	2000

Length 2

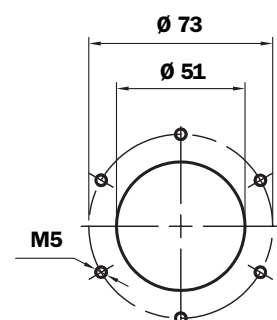
Filtration	l/min
3 μ m	2150
10 μ m	2150

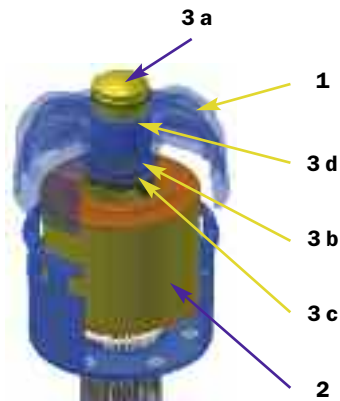
Weight

TAP 115 1: 0,460 Kg

TAP 115 2: 0,585 Kg

Reservoir holes





TAP 115 spare parts

Item.	Description	Q.ty	Filler cap series TAP 115	
1	Complete filler cap	1	See order table	
2	Filter Element	1	See order table	
3	Indicator kit	1	NBR 02005187	FPM 02005188
3a	Visual indicator	1	S62P01	
3b	Seal	1	O-R 3106 Ø 26,64 X 2,62	
3c	Indicator securing screw	1	01022670	
3d	O-R indicator	1	O-R 2112 Ø 28,3 x 1,78	

Changing the filter element in TAP 115 series filler caps

- 1 Thoroughly clean the filler cap and adjacent parts.
- 2 Unscrew and raise the cover.
- 3 Replace the filter element.
- 4 Screw the cover.



Ordering information

Filler cap	1	2	3	4	5	6	7
TAP115	<input type="checkbox"/>	<input type="checkbox"/>	<input type="checkbox"/>	<input type="checkbox"/>	<input type="checkbox"/>	<input type="checkbox"/>	<input type="checkbox"/>
Example: TAP115	2	F	A03	A	1	B	P01
Filter element	1	3	7				
A115	<input type="checkbox"/>	<input type="checkbox"/>	<input type="checkbox"/>				
Example: TAP115	2	A03	P01				

1 - Length

 1
 2

2 - Connection

 F Flange

3 - Filter element

 A03 3 µm - Microfibre
 L10 10 µm - Impregnated paper

4 - Seal

 A NBR
 V FPM

5 - Basket

 0 Without
 1 L= 120 mm

6 - Clogging indicator

 A Without
 B Clogging indicator

7 - Options

 P01 MP Filtri standard

Series TLP 114

Nylon oil filler and air breather filler cap with electrical level indicator



TLP 114 (Materials)

- 1 - Cover: Nylon
- 2 - Filter element: Resin impregnated cellulose
- 3 - Flange: Nylon
- 4 - Basket: Zinc Planted Steel
- 5 - Screws: Zinc Planted Steel
- 6 - Seals: NBR - FPM
- 7 - Level indicator

Level sensor (Materials)

- Flange: Nylon
- Stem: AISI 304
- Float: Nylon

General data

Temperature

- From -15°C to +80°C

Weight

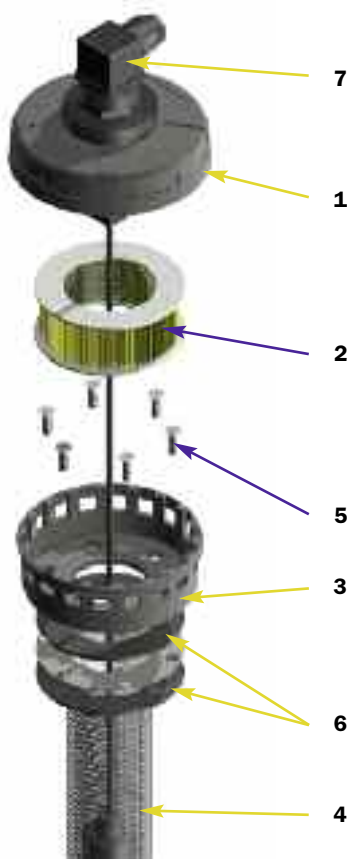
- TLP 114: 650 gr

Compatibility

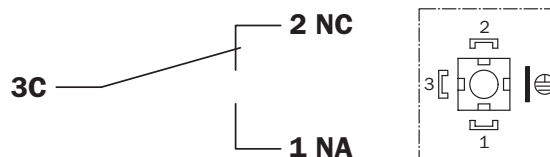
- Mineral/Sintetic oil

Flow rates with Δp : 0,02 bar

Filtration	l/min
10 μ m	1450



Connector EN 175301-803 A/ISO 4400



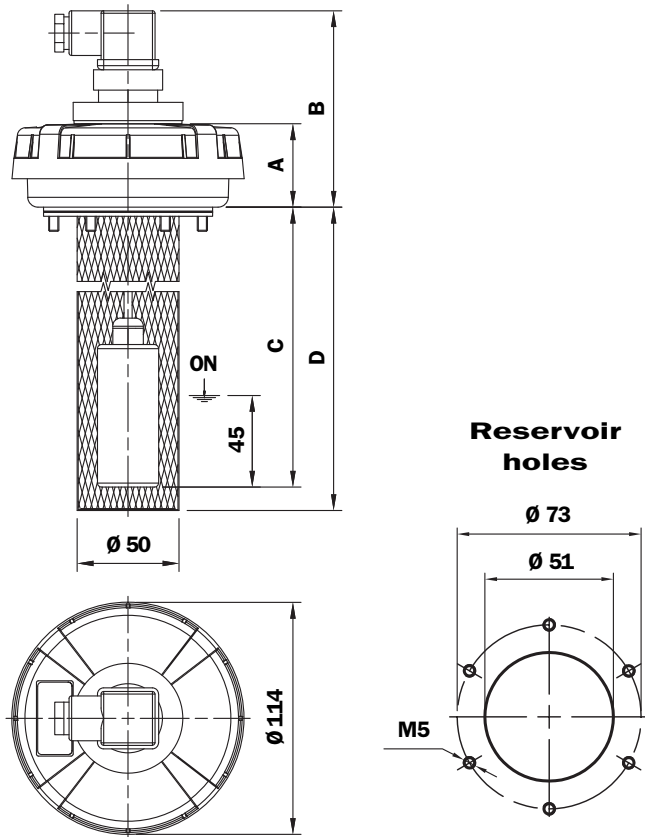
Contact

- SPDT
- Protection degree: IP 65
- Max switchable capacity: 80 W (50 W SPDT)
- Max switchable current: 1 A
- Max switchable voltage: 250 Vac (220 W SPDT)
- Density of fluid: >0,75

Contact

- Ground of level indicator is not connected

Dimensions



Change level sensor length



TLP 114

Length filler cap	A mm	B mm	C mm	D mm
TLP114 1L 10x1P01	41	97	290	302
TLP114 1L 10x2P01	41	97	518	530
TLP114 2L 10x1P01	56	112	275	302
TLP114 2L 10x2P01	56	112	503	530
TLP114 3L 10x1P01	68	124	263	302
TLP114 3L 10x2P01	68	124	491	530

- A)** To screw out the nut
- B)** To extract the float
- C)** To shorten the rod
- D)** To re-assemble

Ordering information

Filler cap	1	2	3	4	5	6
TLP	<input type="checkbox"/>	<input type="checkbox"/>	<input type="checkbox"/>	<input type="checkbox"/>	<input type="checkbox"/>	<input type="checkbox"/>
Example: TLP	114	1	L10	A	1	P01
Filter element	1	2	3	6		
A	<input type="checkbox"/>	<input type="checkbox"/>	<input type="checkbox"/>	<input type="checkbox"/>		
Example: TLP	114	1	L10	P01		

1 - Size

114

2 - Length

1
2
3

3 - Filter element

L10 10 µm - Impregnated paper

4 - Seal

A NBR
V FPM

5 - Basket - Level

1 With electric level indicator and basket L= 300 mm
2 With electric level indicator and basket L= 530 mm

6 - Option

P01 MP filtri standard

Series SMF

Nylon angled flange



SMF (Materials)

1 - Flange: Nylon

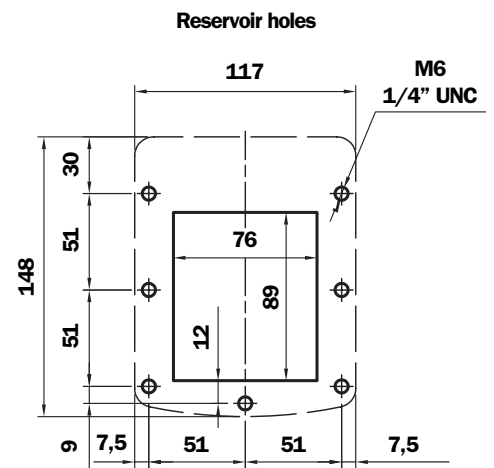
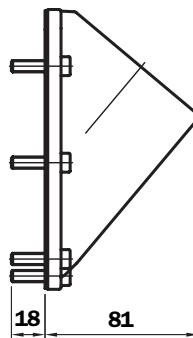
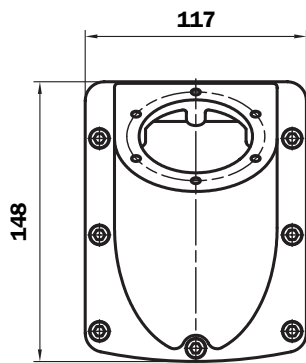
2 - Seals: NBR
Cork gasket

3 - Screws: Galvanised/Phosphated Steel

Weight

SMF: 0,325 kg

Dimensions



Ordering information

SMF1

	1	2	3
	□	□	□
Example: SMF 1	M	A	P01

1 - Connection to reservoir

- M** Fixing with Metric screws
- U** Fixing with UNC screws

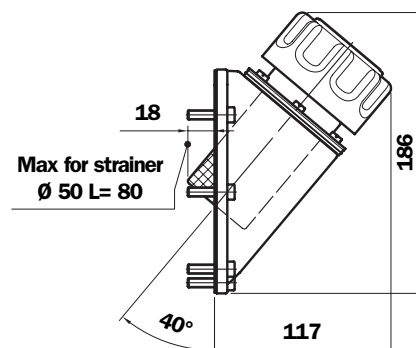
2 - Seal

- A** NBR
- B** Cork gasket

3 - Options

- P01** MP Filtri standard

Dimensions



Flow rate with Δp : 0,02 bar

Filtration	l/min
3 μm	450
10 μm	550

Weight

TAF 80: 0,655 Kg

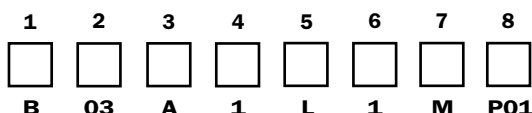
For tank hole see "SMF 1" page 18.

Ordering information

Filler cap

TAF80

Example: TAF80



1 - Filler cap connection

B Flange with bayonet connection

2 - Filter element

- 00** Without filter (Blank filler cap)
- 03** 3 μm - Impregnated paper
- 10** 10 μm - Polyurethane

3 - Seal

- A** NBR
- B** Cork gasket

4 - Pressurisation valve

- 0** Without
 - 1** 0,3 bar pressurisation valve
 - 2** 0,7 bar pressurisation valve
 - 9** Anti-splash feature (only with filter element 3 μm)
- } Only with seal NBR

5 - Variants

- 0** Standard
- L** With Padlock tab

6 - Basket

- 0** Without
- 1** L= 80 mm

7 - Connection to reservoir

- M** Fixing with Metric screws
- U** Fixing with UNC screws

8 - Options

- P01** MP Filtri standard

Series TAF 90

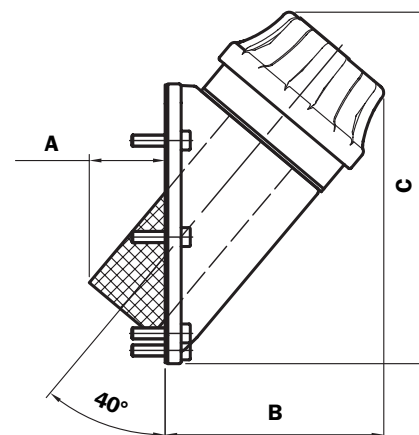
Nylon oil filler and air breather filler caps

Dimensions

TAF 90 ...



TAF 90 B - R - F



Flow rate with Δp : 0,02 bar

Filtration	l/min
3 μm	450
10 μm	550

Weight

TAF 90: 0,535 Kg

Type	A	B	C
TAF90 B - R	40	116	186
TAF90 F	48	109	178

For tank hole see "SMF 1" page 18.

Ordering information

Filler cap	1	2	3	4	5	6	7	8
TAF90	<input type="checkbox"/>	<input type="checkbox"/>	<input type="checkbox"/>	<input type="checkbox"/>	<input type="checkbox"/>	<input type="checkbox"/>	<input type="checkbox"/>	<input type="checkbox"/>
Example: TAF90	B	03	A	1	L	1	M	P01

1 - Filler cap connection

B	Flange with bayonet connection
F	Flange with threaded M52x2 connection Spigot \varnothing 60 (DIN 24557)
R	Flange with threaded connection M52x2

2 - Filter element

00	Without filter (Blank filler cap)
03	3 μm - Impregnated paper
10	10 μm - Polyurethane

3 - Seal

A	NBR
----------	-----

4 - Pressurisation valve

0	Without
1	0,3 bar pressurisation valve
2	0,7 bar pressurisation valve

5 - Variants

0	Standard
L	With Padlock tab
A	With Dipstick
C	With Chain external for connection B With Chain internal for connection F-R (with basket only)
D	With Padlock tab and chain external for connection B With Padlock tab and chain internal for connection F-R (with basket only)

6 - Basket

0	Without
1	L= 120 mm

7 - Connection to reservoir

M	Fixing with Metric screws
U	Fixing with UNC screws

8 - Options

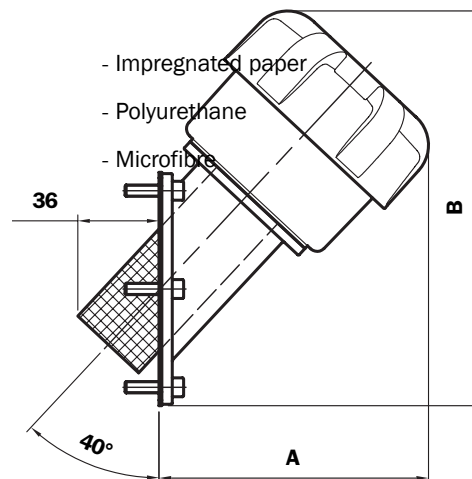
P01	MP Filtri standard
------------	--------------------

Dimensions

TAF 1151 F



TAF 115



Flow rate with Δp : 0,02 bar

Length 1

Filtration	l/min
3 μ m	1600
10 μ m	2000

Weight

TAF 115 1: 0,785 Kg

Length 2

Filtration	l/min
3 μ m	2150
10 μ m	2150

Weight

TAF 115 2: 0,910 Kg

Length	A	B
1	145	216
2	187	266

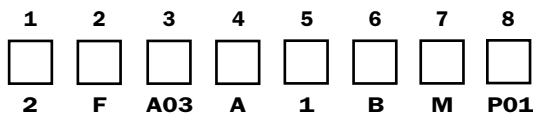
For tank hole see "SMF 1"
page 18.

Ordering information

Filler cap

TAF115

Example: TAF115



1 - Filler cap length

- 1
- 2

2 - Connection

- F Flange

3 - Filter element

- A03 3 μ m - Microfibre
- L10 10 μ m - Impregnated paper

4 - Seal

- A NBR
- V FPM

5 - Basket

- 0 Without
- 1 L= 120 mm

6 - Clogging indicator

- A Without
- B Clogging indicator

7 - Connection to reservoir

- M Fixing with Metric screws
- U Fixing with UNC screws

8 - Options

- P01 MP Filtri standard

Series SML

Aluminium angled flange



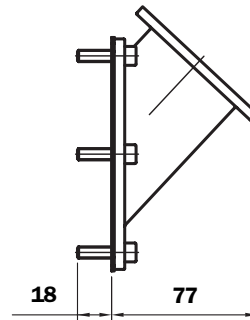
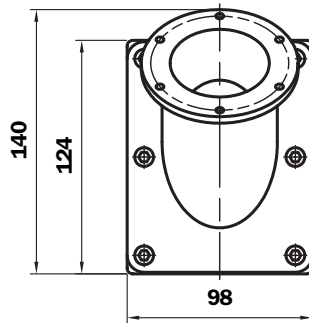
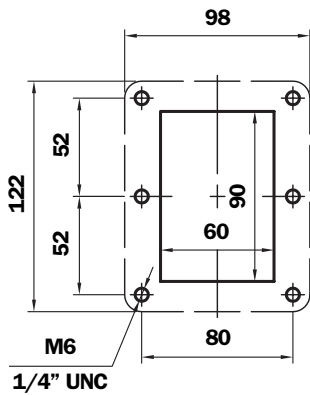
SML (Materials)

- 1** - Flange: Aluminium
- 2** - Screws: Phosphated Steel
- 3** - Seals: NBR
Cork gasket

Weight

SML: 0,380 Kg

Dimensions



Ordering information

SML1

Example: SML 1 **1** **2** **3**
 M **A** **P01**

1 - Connection to reservoir

- M** Fixing with Metric screws
- U** Fixing with UNC screws

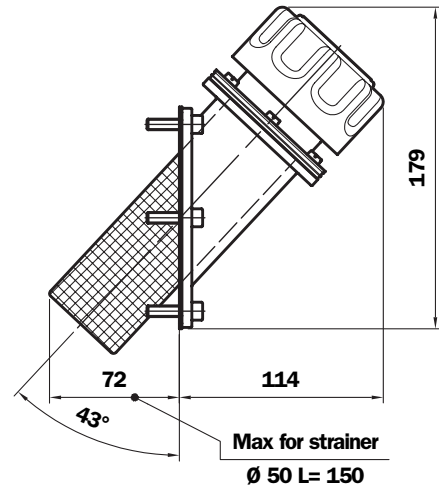
2 - Seal

- A** NBR
- B** Cork gasket

3 - Options

- P01** MP Filtri standard

Dimensions



Flow rate with Δp : 0,02 bar

Filtration	l/min
3 μ m	450
10 μ m	550

Weight

TAL 80 1: 0,710 Kg

For tank hole see "SML 1" page 22.

Ordering information

Filler cap TAL80

Example: TAL80 **B 03 A 1 L 1 M P01**

1 - Filler cap connection

B Flange with bayonet connection

2 - Filter element

00 Without filter (Blank filler cap)

03 3 μ m - Impregnated paper

10 10 μ m - Polyurethane

3 - Seal

A NBR

B Cork gasket

4 - Pressurisation valve

0 Without

1 0,3 bar pressurisation valve

2 0,7 bar pressurisation valve

9 Anti-splash feature (only with filter element 3 μ m)

Only with seal NBR

5 - Variants

0 Standard

L With Padlock tab

6 - Basket

0 Without

1 L= 80 mm

7 - Connection to reservoir

M Fixing with Metric screws

U Fixing with UNC screws

8 - Options

P01 MP Filtri standard

Series TAL 90

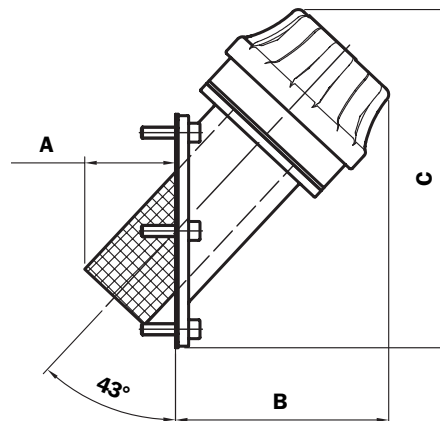
Nylon oil filler and air breather filler caps

Dimensions

TAL 90 ...



TAL 90 B - R - F



Flow rate with Δp : 0,02 bar

Filtration	l/min
3 μ m	450
10 μ m	550

Weight

TAL 90: 0,560 Kg

Type	A	B	C
TAL90 B - R	48	113	179
TAL90 F	56	105	171

For tank hole see "SMF 1" page 18.

Ordering information

Filler cap	1	2	3	4	5	6	7	8
TAL90	<input type="checkbox"/>	<input type="checkbox"/>	<input type="checkbox"/>	<input type="checkbox"/>	<input type="checkbox"/>	<input type="checkbox"/>	<input type="checkbox"/>	<input type="checkbox"/>
Example: TAL90	B	03	A	1	L	1	M	P01

1 - Filler cap Connection

B	Flange with bayonet connection
F	Flange with threaded connection M52x2 Spigot \varnothing 60 (DIN 24557)
R	Flange with threaded connection M52x2

2 - Filter element

00	Without filter (Blank filler cap)
03	3 μ m - Impregnated paper
10	10 μ m - Polyurethane

3 - Seal

A	NBR
----------	-----

4 - Pressurisation valve

0	Without
1	0,3 bar pressurisation valve
2	0,7 bar pressurisation valve

5 - Variants

0	Standard
L	With Padlock tab
C	With Chain external for connection B With Chain internal for connection F-R (with basket only)
D	With Padlock tab and chain external for connection B With Padlock tab and chain internal for connection F-R (with basket only)

6 - Basket

0	Without
1	L= 120 mm

7 - Connection to reservoir

M	Fixing with Metric screws
U	Fixing with UNC screws

8 - Options

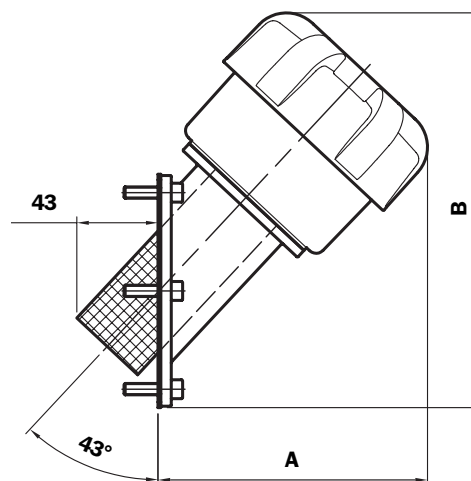
P01	MP Filtri standard
------------	--------------------

Dimensions

TAL 115 1 F



TAL 115



Flow rate with Δp : 0,02 bar

Length 1

Filtration	l/min
3 μ m	1600
10 μ m	2000

Weight

TAL 115 1: 0,840 Kg

Length 2

Filtration	l/min
3 μ m	2150
10 μ m	2150

Weight

TAL 115 2: 0,965 Kg

Length	A	B
1	143	209
2	187	257

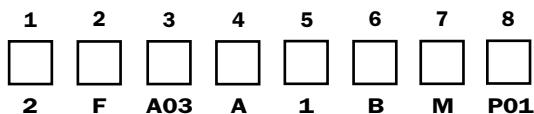
For tank hole see "SML 1" page 22.

Ordering information

Filler cap

TAL115

Example: TAL115



1 - Filler cap length

- 1
- 2

2 - Connection

- F Flange

3 - Filter element

- A03 3 μ m - Microfibre
- L10 10 μ m - Impregnated paper

4 - Seal

- A NBR
- V FPM

5 - Basket

- 0 Without
- 1 L= 120 mm

6 - Clogging indicator

- A Without
- B Clogging indicator

7 - Connection to reservoir

- M Fixing with Metric screws
- U Fixing with UNC screws

8 - Options

- P01 MP Filtri standard

Series ATS

Universal adapter for filling to reservoir

Possible use with oil filter/air breather filler caps

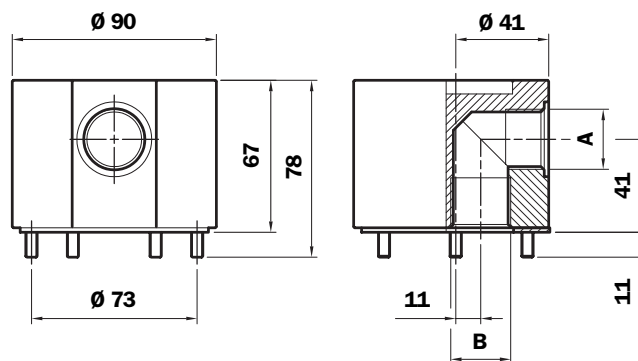
type:

- TA 80
- TAP 90
- TAP 115
- SCS 100 F

Dimensions



Adapter for Filler and breather plugs



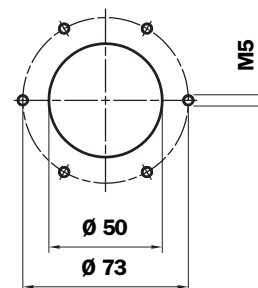
ATS (Materials)

- 1 - Adapter: Anodised Aluminium
- 2 - Screws: Steel
- 3 - Seals: NBR
FPM
Cork Gasket

Weight

ATS: 1 Kg

Reservoir holes



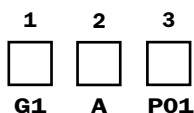
Connection	A	B
G1	G 3/4"	G 3/4"
G2	SAE 12	1 1/16" 12 UN

Ordering information

Adapter for filler caps

ATS 1

Example: ATS 1



1 - Connection

G1	G 3/4"
G2	SAE 20 (1 1/16" 12 UN)

2 - Seal

A	NBR
B	Cork gasket
V	FPM

3 - Options

P01	MP Filtri standard
-----	--------------------

VISUAL LEVEL INDICATORS



LV...

The level indicators series is available for both static and mobile applications; the construction materials used make it possible to guarantee service with wide temperature variations and compatibility with all hydraulic fluids. Series LV... level indicators are available with fixing centre distance from 76 to 1000 mm.

LVK

This level indicator series is available with electric alarm and visual and electrical temperature switches, level indicators are available with fixing centre distance from 76 to 254 mm.

LC...

LC... series sight plugs allow visibility of the fluid contained in the reservoirs, showing the level and also any changes in transparency and emulsion.

These indicators are available in three configurations, with transparent plastic body and with black body, and an aluminium body version. Fixing to reservoirs with unthreaded holes or reduced thickness can be achieved using series LCC/T equipped with expansion kit.

Temperature

- LVA: from -25 °C to +80 °C
- LVU: from -25 °C to +70 °C
- LVU: from -25 °C to +100 °C (only with pyrex lens)
- LVK/LC...: from -20 °C to +80 °C

Compatibility

LVA/LVK/LVU

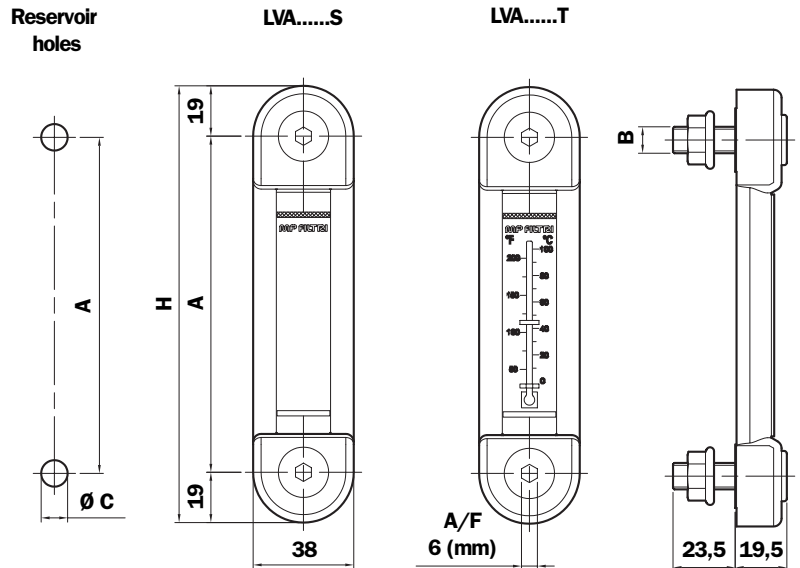
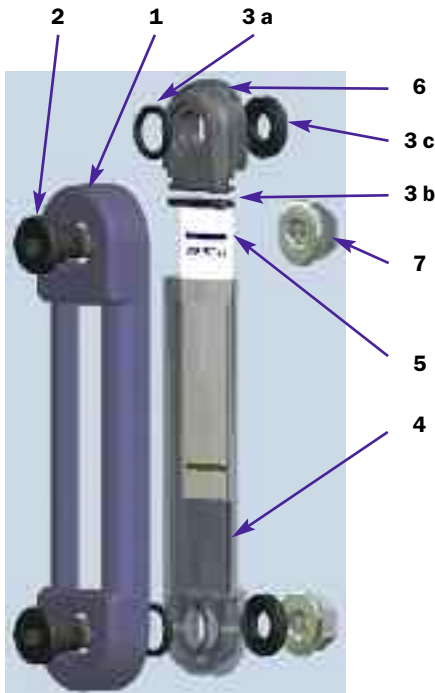
- NBR seals and Cork Gasket, compatible with: Mineral oils to ISO 2943 - aqueous emulsions Synthetic fluids, glycol water.
- FPM seals, compatible with: Synthetic fluids type HS-HFDR-HFDS-HFDU.

LC...

- Mineral oils to ISO 2943 - aqueous emulsions Synthetic fluids, glycol water.

Series LVA

Dimensions



LVA (Materials)

- 1 - Cover: Polyamide
- 2 - Screws: Galvanised Steel
- 3 - Seals: NBR
FPM
- 4 - Lens: Polyamide
- 5 - Nameplate: Painted Aluminium
- 6 - Terminal cap: Nylon
- 7 - Nuts: Galvanised Steel

Weight

- LVA10: 0,13 Kg
- LVA20: 0,18 Kg
- LVA30: 0,23 Kg

Quantity per pack Number of Parts

LVA	10
-----	----

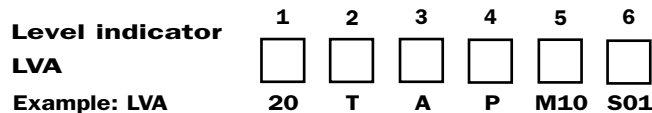
Size	A	H
LVA10	76	114
LVA20	127	165
LVA30	254	292

Screw tightening torque: 15Nm

Type	B	C
LVA.....M10	M10	10,5
LVA.....M12	M12	12,5
LVA.....U38	3/8" UNC	10
LVA.....U12	1/2" UNC	13,5

Ordering information

LVA20T.....S01



1 - Size

- 10
- 20
- 30

2 - Accessories

- S Without thermometer
- T With thermometer

3 - Seal

- A NBR
- V FPM

4 - Cover

- P Cover Polyamide

5 - Connection

- M10 Screws M10
- M12 Screws M12
- U38 Screws 3/8" UNC
- U12 Screws 1/2" UNC

6 - Options

- S01 With nuts - Tag MP Filtri
- S02 Without nuts - Tag MP Filtri

Series LVK

Description

Visual/electric level indicator with temperature controls for both static and mobile applications.

Completely transparent, it provides a view of the fluid over the entire length, both from the front and on both sides.

The quality and thickness, 4 millimetres, of the construction material provides the utmost dependability and mechanical strength without any need for additional protection.

LVK (Materials)

1 - Body: Polyamide

2 - Screws: Nickel Plated Brass (Standard)
AISI 316 (Option)

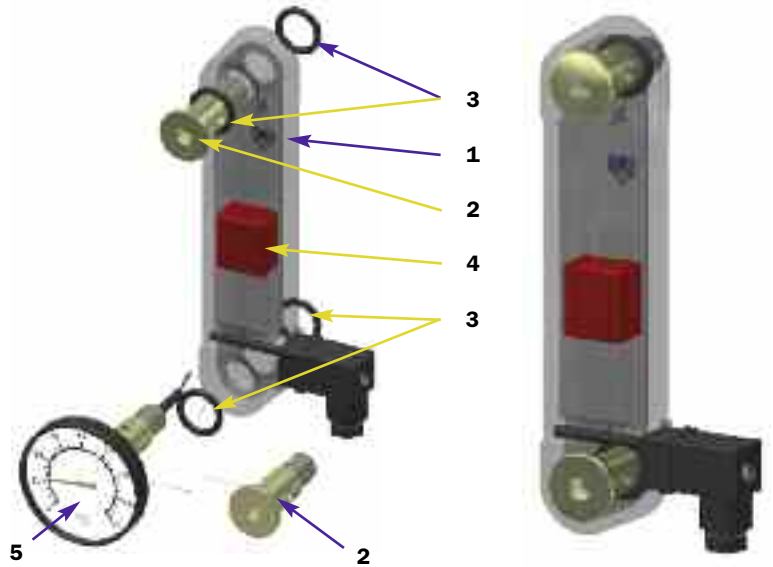
3 - Seals: NBR (Standard)
FPM (Option)

4 - Float: Polyamide

5 - Sensor thermometer: Screw + thermometer

Temperatures: from -20 °C to +80 °C

Screw tightening torque: 10Nm

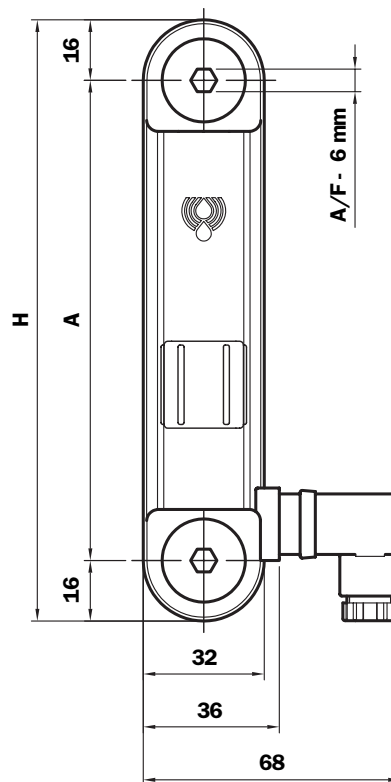
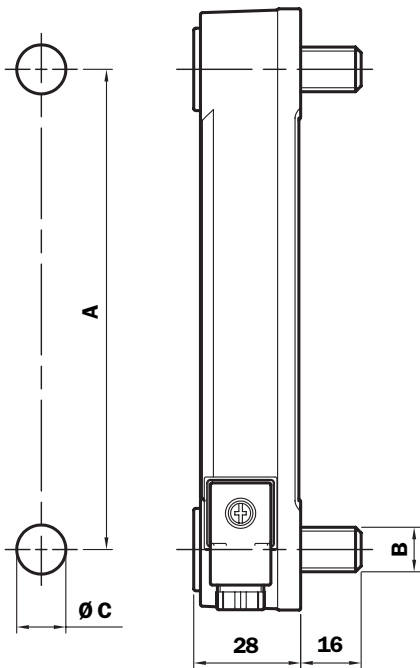


Compatibility

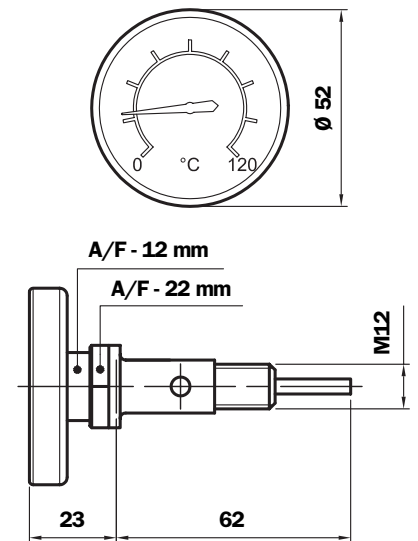
- NBR seals, compatible with:
Mineral oils to ISO 2943 - aqueous emulsions
Synthetic fluids, glycol water.
- FPM seals, compatible with:
Synthetic fluids type HS-HFDR-HFDS-HFDU.

Dimensions

Reservoir holes



Sensor thermometer



Weight (Kg)

Weight

LVK10: 0,14 Kg

LVK20: 0,17 Kg

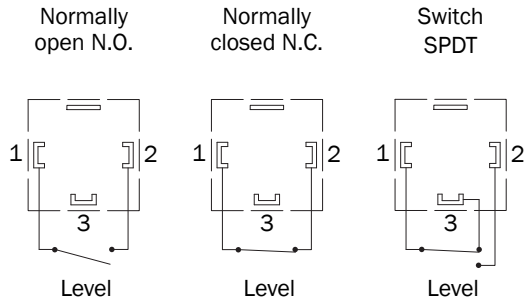
LVK30: 0,25 Kg

Size	A	H	Type	B	C
LVK10	76	108	LVK.....M10	M10	10,5
LVK20	127	159	LVK.....M12	M12	12,5
LVK30	254	286			

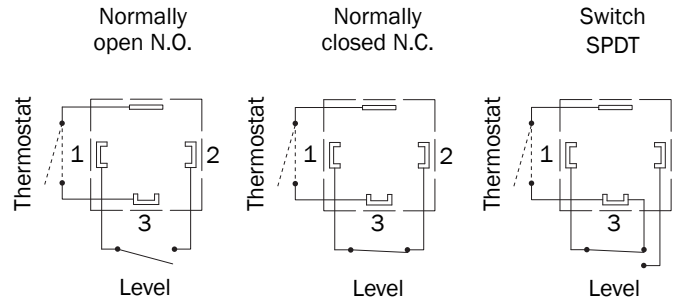
TV12	0,100	Kit Sensor thermometer + Screw M12
------	-------	------------------------------------

Combination of available electrical contacts

Electrical contact with no liquid

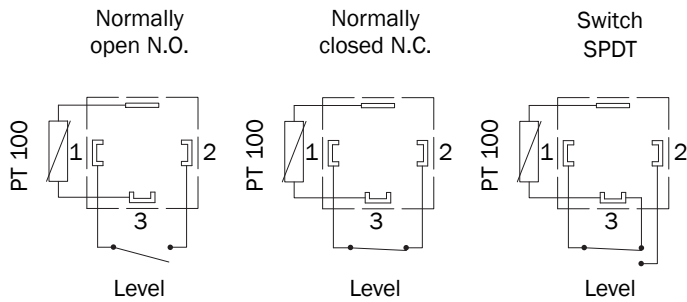


Electrical contact with no liquid + thermostat

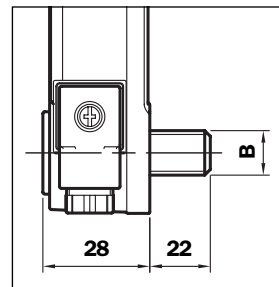


Available thermostated contact N.C. - N.O. in both setups

Electrical contact with no liquid + PT 100



Dimension screw + electrical contact + thermostated or PT 100



Thermostat electrical specifications

Voltage: 250 V Switchable
 Frequency: 50 Hz
 Load values: 4.0 A. $\cos \varphi$ 0.6 (IMOT)
 6,3 A. $\cos \varphi$ 1 (IN)
 Max load: 10 A. $\cos \varphi$ 1
 Switching temperature: 50°C - 60°C - 70°C
 Tolerances: $\pm 5^\circ\text{C}$

Electrical specifications

	N.O. N.C.	Switch
D.C. Switchable Power	40 W	20 W
D.C. current intensity - A.C.	40 V.A.	-
Switchable voltage.	2 A	1 A
Voltage switchable	230 V	150 V

Contact with no liquid

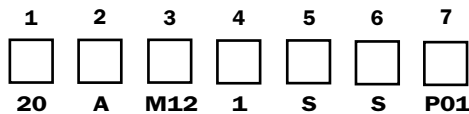
Protection degree: IP65

Ordering information

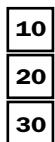
Level indicator

LVK

Example: LVK



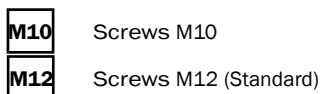
1 - Size



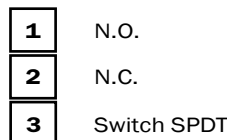
2 - Seal



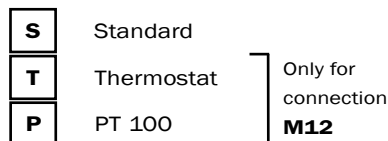
3 - Connection



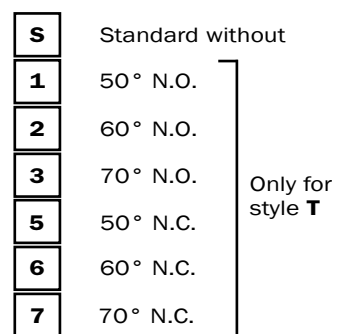
4 - Electrical contacts with no liquid



5 - Style



6 - Thermostat



8 - Options

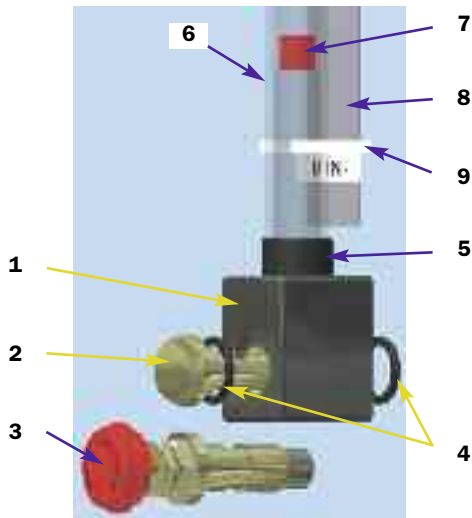


Accessories/Options*

TV12	Kit w/ Sensor thermometer Screw M12	M12 X	Kit w/ Screws M12 stainless steel AISI 316
M10 X	Kit w/ Screws M10 stainless steel AISI 316	02050432	Kit w/ FPM seals

* All the accessories are supplied separately from code LVK

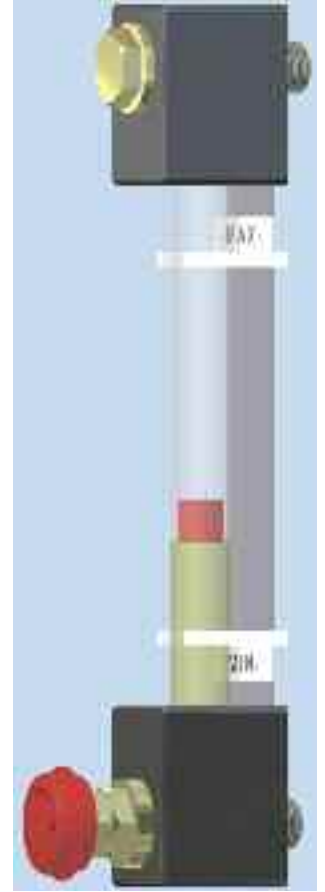
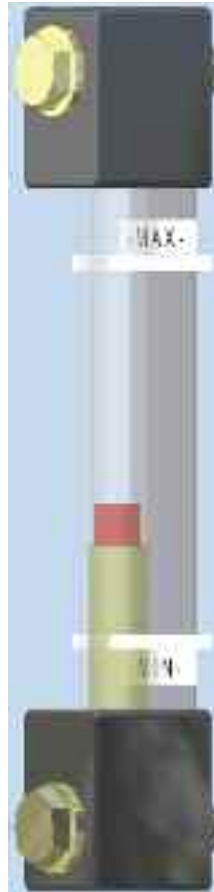
Series LVU



LVU (Materials)

- 1 - Head: Nylon
- 2 - Connection G 3/8": Nickel Plated Brass
- 3 - G 3/8" valve: Steel
- 4 - Seal: NBR
- 5 - Pipe Seal: NBR
- 6 - Pipe: Acrylic
Pyrex
- 7 - Float: Nylon
- 8 - Protection: Aluminium
- 9 - Clamps MIN - MAX: Nylon

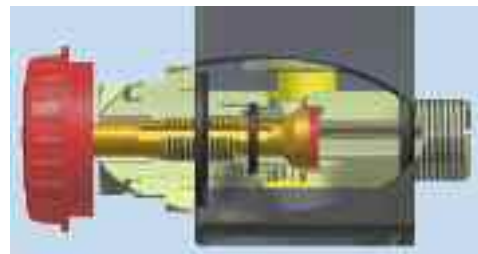
Weight	Vesion U	Vesion S
LVU 0500	0,780 kg	0,580 kg
LVU 1000	1,150 kg	0,790 kg
LVU 1500	1,550 kg	1,100 kg
LVU 2000	1,950 kg	1,400 kg



Open the valve completely.

Allows the oil to flow from the reservoir to the level tube.

ATTENTION - The intermediate valve opening or closing position allows the oil to flow from the reservoir to the exterior.

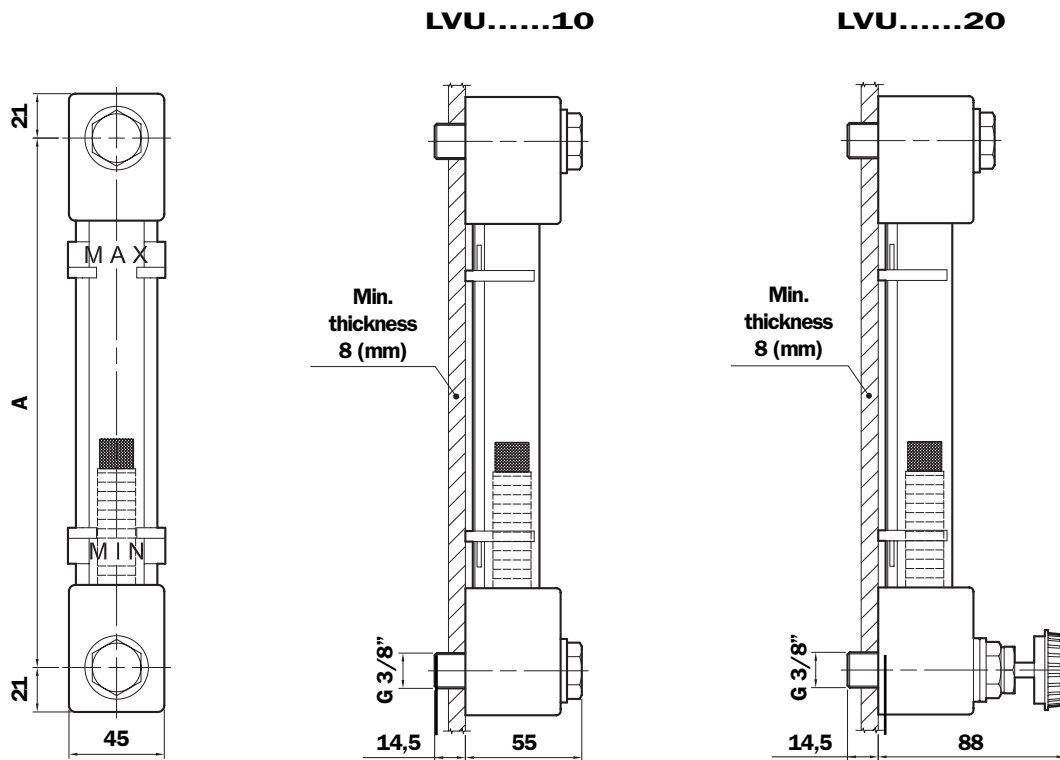


Close the valve fully.

Stops the oil flow from the reservoir to the level tube.

Allows the oil to be discharged from the level tube to an external container.

Dimensions



Spare parts LVU

Item.	Description	Q.ty	LVU
1	Seals kit	1	02050130
4	O-Ring	4	OR 4181 Ø 20,22 x 3,53
2	Fixing element kit series 10	1	02049014
2	G 3/8" connection	2	
3	Fixing element kit series 20	1	02049015
2	G 3/8" connection	1	
3	G 3/8" bibcock	1	

Size	A (mm)
0500	500
1000	1000
1500	1500
2000	2000

Ordering information

Level indicator
LVU
Example: LVU 1 2 3 4 5

0500 **U** **A** **10** **P01**

1 - Size

0500	Dimension "A" in mm
1000	Dimension "A" in mm
1500	Dimension "A" in mm
2000	Max. dimension "A" in mm
xxxx	Dimension "A" in mm (on request)

2 - Variants

S	Standard
U	"U" protection
P	"U" protection + Pyrex lens (max size 1500)

3 - Seal

A	NBR
----------	-----

4 - Connection

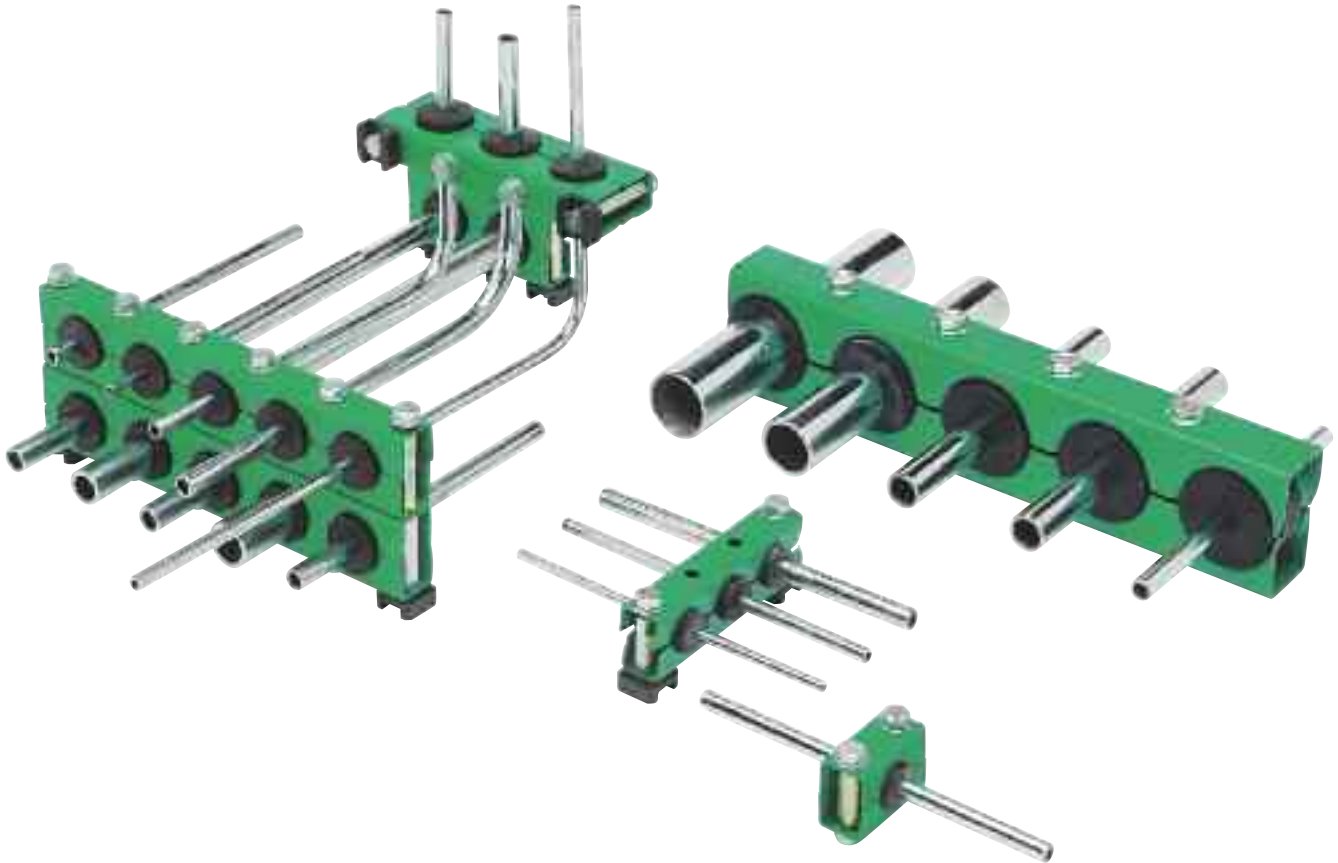
10	2 G 3/8" connections
20	1 G 3/8" connection + 1 valve

5 - Options

P01	MP Filtri standard
------------	--------------------

MULTIFIX

FIXING CLAMPS



MULTIFIX fixing clamps are particularly suitable when a series of pipelines must be installed requiring neat and high precision installation.

These brackets make it possible to install various pipelines of different types and diameters, rapidly, easily, and, more importantly, economically.

MULTIFIX clamps support, guide, and absorb impact and vibration, protecting the pipes and dispensing with the need for complex and unsightly mounting systems with angle clamps etc. An orderly layout facilitates maintenance resulting in significant savings in running costs; it also allows intuitive visual design of the plant, which can be assembled easily even without specialised labour.

Temperature

- from -25°C to +100°C

Compatibility

- NBR seals and Cork Gasket, compatible with:
Mineral oils to ISO 2943 - aqueous emulsions
Synthetic fluids, glycol water.

Series SFT

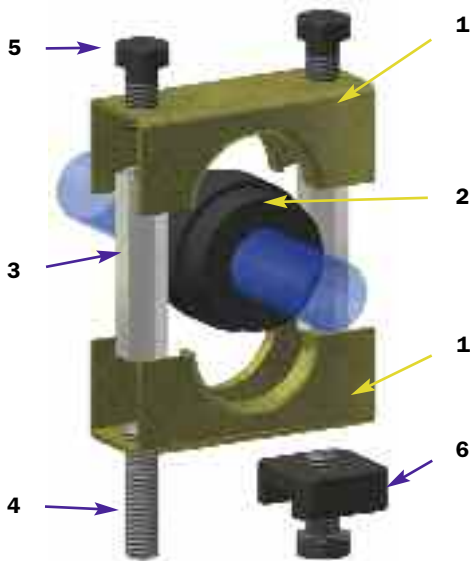
SFT Single

SFT (Materials)

- 1 - Pair of brackets: Galvanised Steel
- 2 - Bush: NBR
- 3 - Spacer: Steel
- 4 - Studs: Steel
- 5 - Screws: Steel
- 6 - Foot + screw: Steel

Ordering information Size

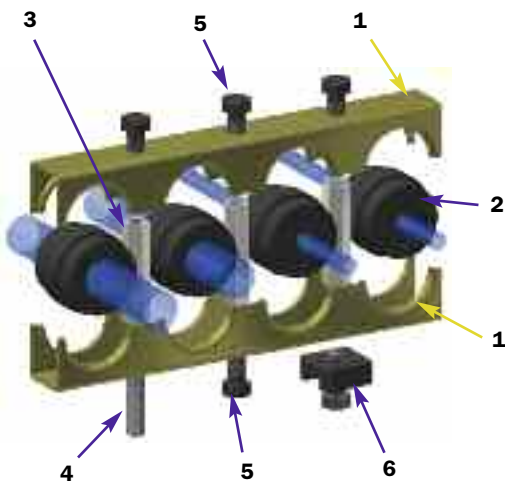
- 1 - SFT 38 - 51 - 78
- 2 - B 38 - 51 - 78
- 3 - D 38 - 51 - 78
- 4 - P 38 - 51 - 78
- 5 - Screws: Steel
- 6 - W 38 - 51 - 78



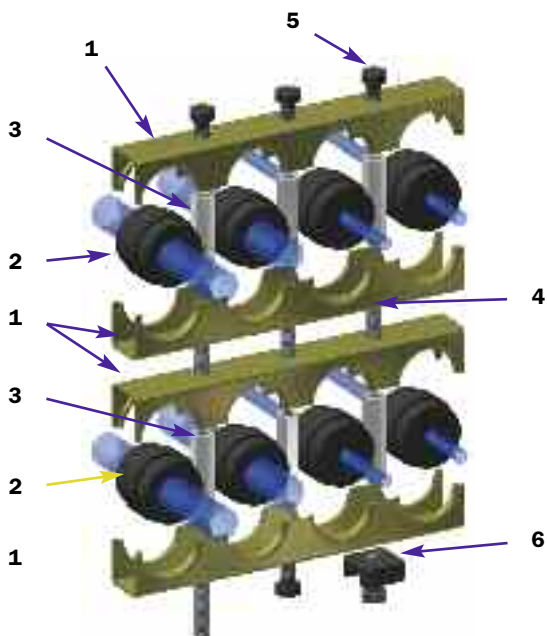
Fixing with threaded holes



Fixing with welded foot



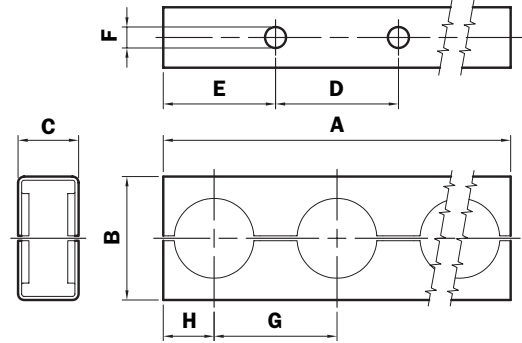
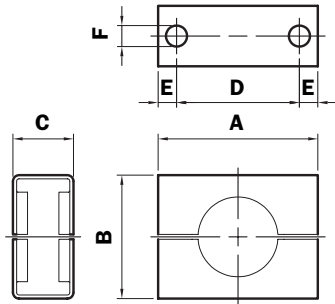
SFT Modular



SFT Modular and Stacked

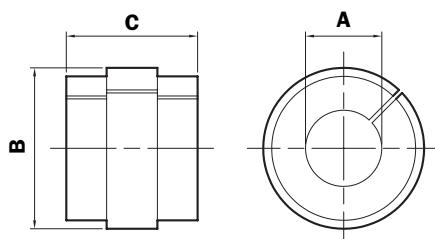
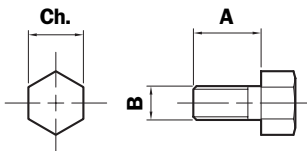
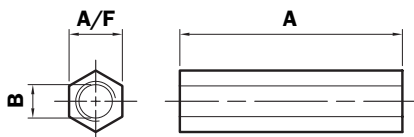
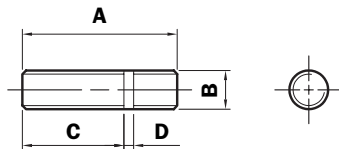
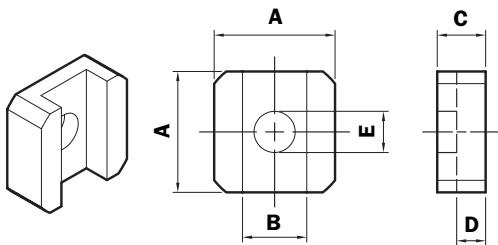


Dimensions



Ordering information	A	B	C	D	E	F	Weight (Kg)
SFT 38 1	56	38	25	38,1	9	8,7	0,07
SFT 51 1	66	51	25	50,8	7,5	8,7	0,09
SFT 78 1	95	78	41	76,2	9,5	11,1	0,34

Ordering information	A	B	C	D	E	F	G	H	Weight (Kg)
SFT 38 26	982	38	25	38,1	34	8,7	38,1	15	1,04
SFT 51 19	956	51	25	50,8	47	8,7	50,8	21	1,25
SFT 78 16	1213	78	41	76,2	72	11,1	76,2	35	4,14



Foot	SFT 38/51	SFT 78
A	25	32
B	13,3	17,5
C	10	12
D	6	8
E	8,5	11

Stud	SFT 38/51	SFT 78
A	32	38
B	M8	M10
C	21	22
D	2	2

Spacer	SFT 38	SFT 51	SFT 78
A	33	46	72
B	M8	M8	M10
Ch.	11	11	13

Screw	SFT 38/51	SFT 78
A	16	30
B	M8	M10
Ch.	13	17

Bushes SFT 78

B = \varnothing 59 C = 45
 \varnothing A

Bushes SFT 51

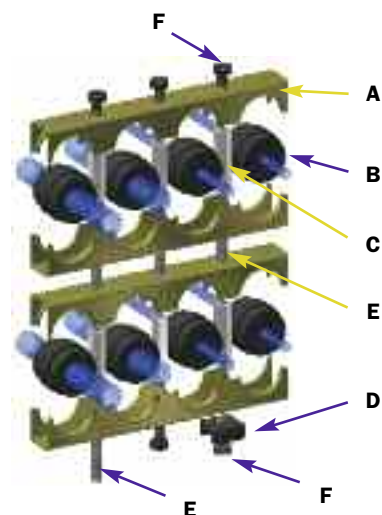
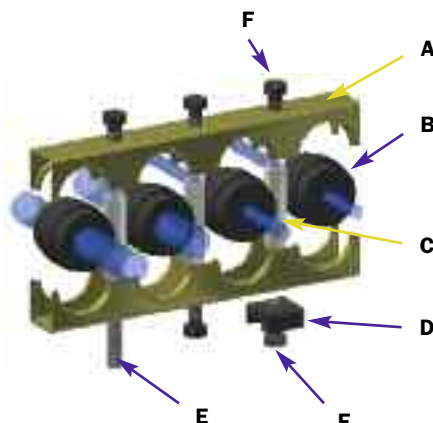
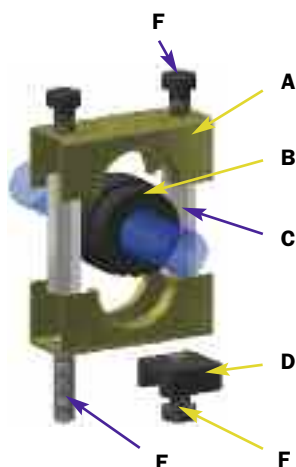
B = \varnothing 38 C = 31
 \varnothing A

Bushes SFT 38

B = \varnothing 25 C = 31
 \varnothing A

6	8
8	10
10	12
12	15
15	18
18	22
22	25
25	28
28	33
	35
	42
	50

Ordering information



PIPES FIXING CLAMPS ORDERING INFORMATION

Fixing clamps

SFT

Example: SFT

1	2	3
<input type="checkbox"/>	<input type="checkbox"/>	<input type="checkbox"/>
51	19	P01

1 - Size

38
51
78

2 - No. of tube connections

Single style

1	All sizes / Single hole
---	-------------------------

Multiple style

26	Size 38 / No. holes: 26
19	Size 51 / No. holes: 19
16	Size 78 / No. holes: 16
xx	On request

3 - Options

P01	MP Filtri standard
-----	--------------------

ORDERING INFORMATION FOR ACCESSORIES FOR: SFT

" B " Pipe bushes

Size 38	Size 51	Size 78	Øe Pipe (mm)	Øe Pipe (inch)
B38 6	B51 6	-	6	1/4"
B38 8	B51 8	B78 8	8	5/16"
B38 10	B51 10	B78 10	10	3/8"
B38 1214	B51 1214	B78 1214	12 - 14	1/2"
B38 1516	B51 1516	B78 1516	15 - 16	5/8"
B38 1820	B51 1820	B78 1820	18 - 20	3/4"
	B51 22	B78 22	22	7/8"
	B51 25	B78 25	25	1"
	B51 28	-	28	-
		B78 2830	28 - 30	1 1/8"
		B78 33	33	1 1/4"
		B78 3538	35 - 38	1 3/8" - 1 1/2"
		B78 42	42	1 3/4"
		B78 50	50	2"

Example: B 51 1516

" C " Spacer

D38M	Size 38 Metric
D51M	Size 51 Metric
D78M	Size 78 Metric
D38U	Size 38 UNC
D51U	Size 51 UNC
D78U	Size 78 UNC

Example: D 51 M

" D " Foot

W3851	Size 38 and 51
W78	Size 78

Example: W 3851

" E " Stud

P3851M	Size 38 and 51 Metric
P78M	Size 78 Metric
P3851U	Size 38 and 51 UNC
P78U	Size 78 UNC

Example: P3851 M

" F " Screw

V3851M	Size 38 and 51 Metric
V78M	Size 78 Metric
V3851U	Size 38 and 51 UNC
V78U	Size 78 UNC

Example: V 3851 M